

supermax

Family Overview

Styles

supermax wide
supermax square
supermax tall

About the Font

LL supermax pays homage to Max Bill (1908–1994), one of Switzerland's most eminent artistic figures of the 20th century. A short-term student at the Bauhaus in Dessau (1927/28), Bill quickly established himself as a prolific artist, architect and product designer who also excelled as a graphic designer early in his career. LL supermax is inspired by letterforms developed from a purely geometric lozenge-shaped emblem,

which Bill used as a single, enigmatic visual device on his famous Negerkunst poster, created for an exhibition of prehistoric cave paintings at Kunsthaus Zürich in 1931. He later employed the same graphic device in two versions – once vertically, once horizontally – as a template to shape the words 'Neubühl' (1931) and 'Wohnbedarf' (1932) on two of his most emblematic poster designs.

Supported Scripts Latin Extended

Separate PDF LL Supermax is published as part of Lineto 1.2 alongside LL Autoscape Var.

File Formats Opentype CFF, Truetype, WOFF, WOFF2

Design Cornel Windlin (1998), Pablo Desportes (2022–2024)

Contact	General inquiries: service@lineto.com	Lineto GmbH Lutherstrasse 32 CH-8004 Zürich Switzerland
	Technical inquiries: support@lineto.com	
	Sales & licensing inquiries: sales@lineto.com	www.lineto.com

Glyph Overview

Unicase	a b c d e f g h i j k l m n o p q r s t u v w x y z
Proportional, Tabular Figures	o i n 3 4 5 6 7 8 9
Ligatures	ff ffi ffi fi fl fj ft rf ri rfi rfl rt tt
Std Accented Characters – Standard Western	à á â ã ä å æ ç è é ê ë ì í î ï ð ñ ñ œ ò ó ô õ ö ø ù ú û ü ý ÿ ž þ
Pro Accented Characters – Latin Extension	ā ā ą ă ċ ĉ ċ č đ ē ě ě ę ħ ħ ğ ğ ħ ĩ ĩ ĳ ĳ ĵ Ĵ Ĵ Ĵ Ĵ Ĵ Ĵ Ĵ Ĵ ŕ ŕ ŕ ŕ ŕ ŕ ŕ ŕ ŕ ŕ ŕ ŕ ŕ ŕ ŕ ŕ ŕ š š š š ť ť ť ť ť ť ť ť ť ť ť ť ť ť ű ŭ ŭ ŭ ŭ ŭ ŭ ŭ ŭ ŭ ŭ ŭ ŭ ŭ ŭ ŭ ŭ ŭ
Punctuation	(. , : ; ° ! ¢ ¡ …) [& @ #] { - – — } « » € „ ” ” ’ ’ _ / \ ‘ ’ † ‡ * • ¶ § © ® ™
Currency, Mathematical Operators	₪ ₦ ₧ ₨ ₫ % ∞ + − × ÷ = ≠ ≈ < > ≤ ≥ ± ~ ¬ ♦ ∂ Δ Π Σ Ω μ π ϑ ∞ √ ^ ¡ º /
Superscripts, Subscripts, Numerators, Denominators, Fractions, Ordinals	h o i n 3 4 5 6 7 8 9 h o i n 3 4 5 6 7 8 9 l o i n 3 4 5 6 7 8 9 l o i n 3 4 5 6 7 8 9 l ½ ⅓ ¼ ⅕ ⅙ ⅐ ⅑ ⅒ ⅓ ⅔ ⅘ ⅚ ⅜ ⅝ ⅞ ⅞ l ° °
Circled Numbers	⓪ Ⓛ Ⓜ Ⓝ Ⓟ Ⓠ Ⓡ Ⓢ Ⓣ Ⓤ Ⓩ Ⓛ Ⓜ Ⓝ Ⓟ Ⓠ Ⓡ Ⓢ Ⓣ Ⓤ

Layout Features

Standard Ligatures	flat office artificial	flat office artificial
Arbitrary Fractions	14 1/5 x 2 3/5 100 1/5 4 2/3 ÷ 5 5/5	14 1/5 x 2 3/5 100 1/5 4 2/3 ÷ 5 5/5
Contextual Multiplication Glyph	2 x 3 35 x 75 cm	2 x 3 35 x 75 cm
Superscript	north¹, east²	north¹, east²
Subscript	h₂o	h₂o
Ordinals	1^a 1^o	1^a 1^o

Stylistic Set 01: Double-Storey a	carbon	carbon
Stylistic Set 02: Closed c	trotac	trotac
Stylistic Set 03: Straight f, r	surface	surface
Stylistic Set 04: Alternate r	thermal	thermal
Stylistic Set 05: Diagonal v	vaporized	vaporized
Stylistic Set 06: Supermax Set	garnet system sizing	garnet system sizing
Stylistic Set 07: Alternate Accent Set	sócutitá	sócutitá
Stylistic Set 08: Alternate 1, 7	100% 72°	100% 72°
Stylistic Set 09: Alternate 2	plasma 2	plasma 2
Stylistic Set 10: Thin Dashes	malt-oject	malt-oject
Stylistic Set 11: Short Brackets	(10*)+[24x3] {clearance}	(10*)+[24x3] {clearance}

148 Points

**electron
focal**

80 Points

co₂ laser

80 Points

plasma

114 Points

bystronic

114 Points

bystronic

114 Points

bystronic

54 Points

**sizing spot – garnet
(5) multi axis**

54 Points

**sizing spot – garnet
(5) multi axis**

54 Points

**sizing spot – garnet
(5) multi axis**

148 Points

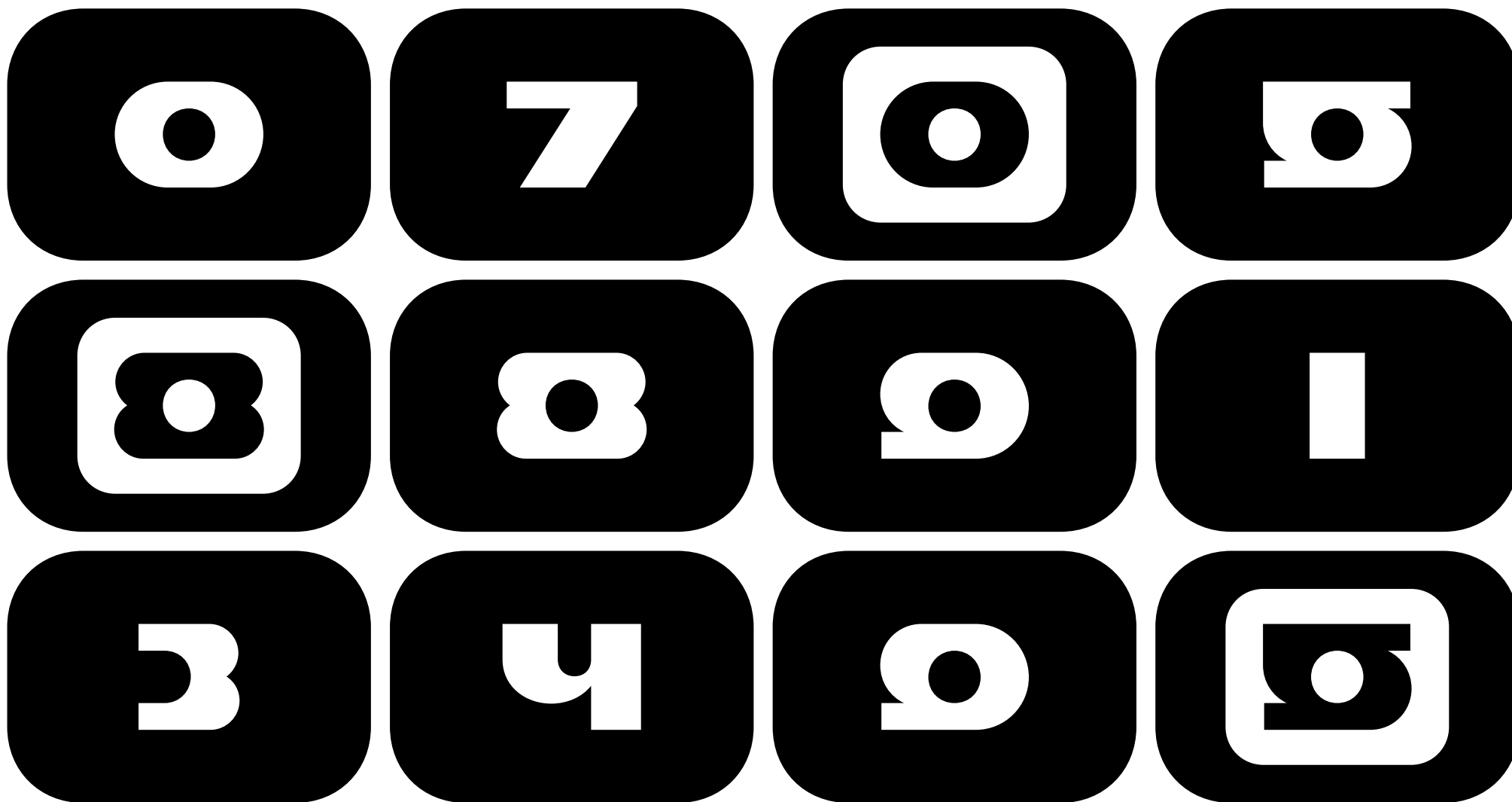
conical
drill

80 Points

On axis
laser cuff spot

LL Supermax wide

148 Points



203 Points

ocooco
cooco
yoww
laoor

148 Points

**photonic
focus**

72 Points

**depth: [2xσ]mm
@air assist**

LL Supermax Square

312 Points



148 Points

nozzle
clearance

68 Points

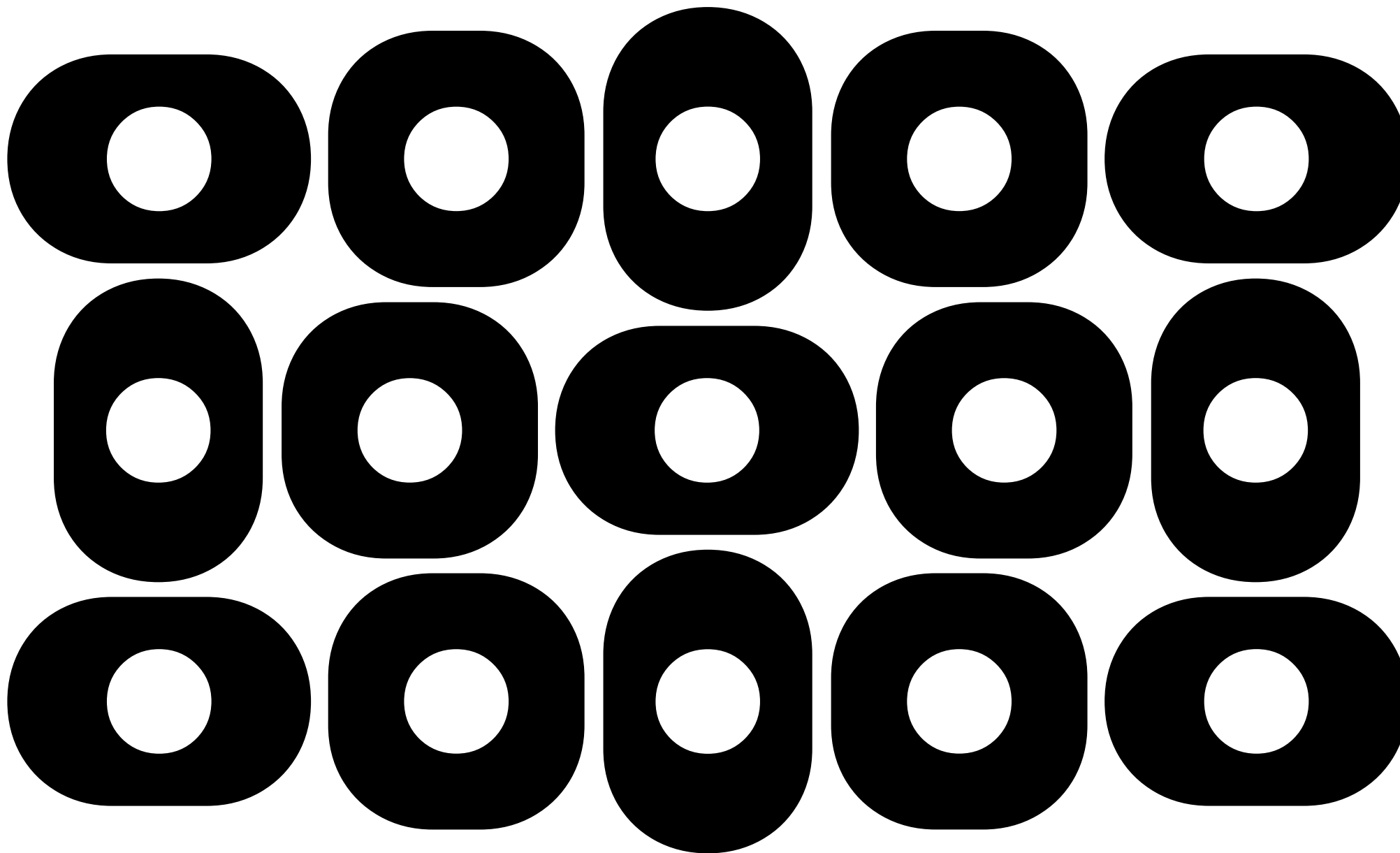
plasma
(melt eject)

232 Points

modulation

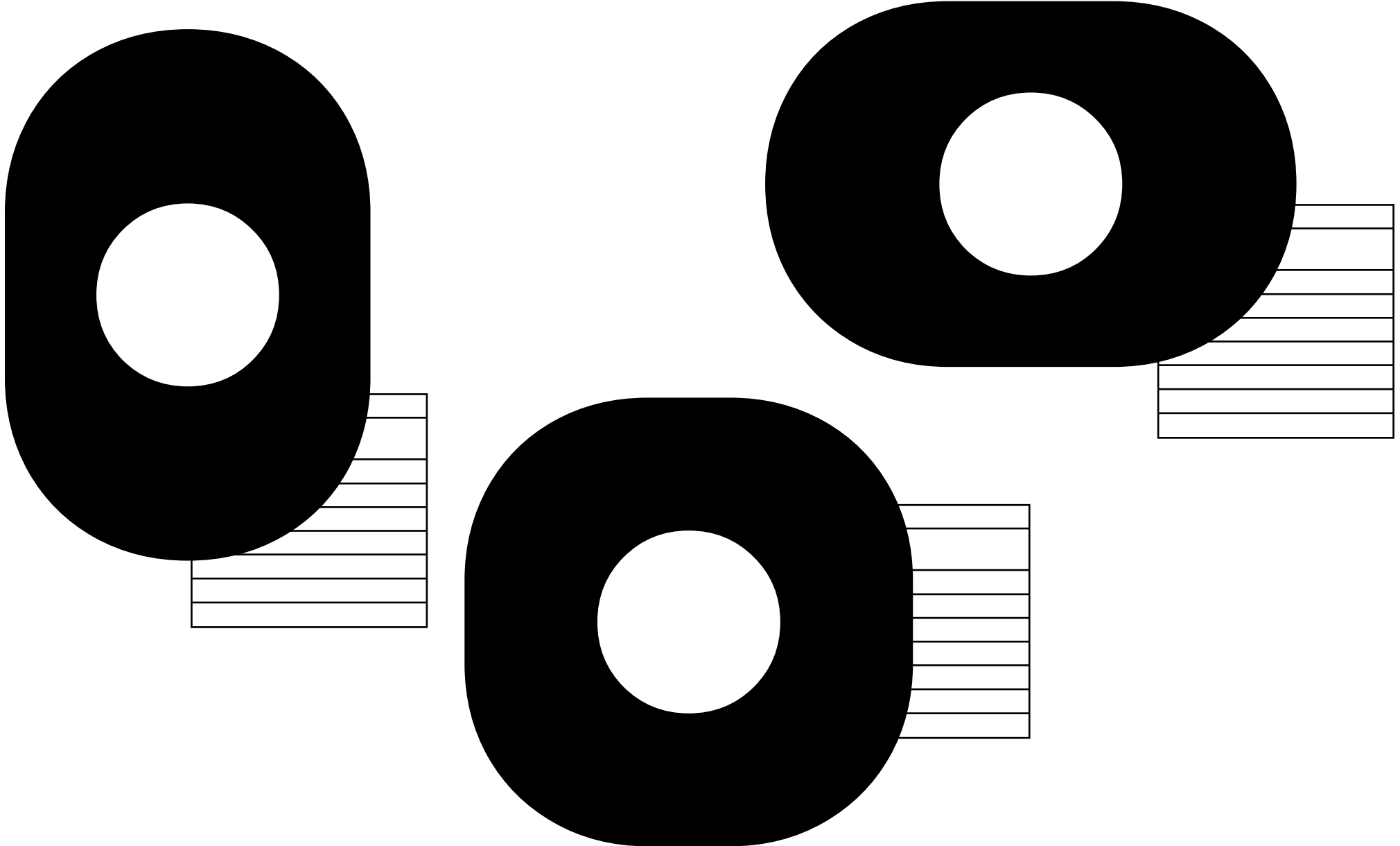
LL Supermax Family

220 Points



LL Supermax Family

386 Points



Technical Information

Latin	Afrikaans	Koyraboro Senni	Spanish
	Albanian	Langi	Swahili
	Asturian	Latvian	Swedish
	Asu	Lithuanian	Swiss German
	Basque	Lower Sorbian	Tachelhit
	Bemba	Luo	Taita
	Bena	Luxembourgish	Tasawaq
	Breton	Luyia	Teso
	Catalan	Machame	Turkish
	Chiga	Makhuwa-Meetto	Upper Sorbian
	Colognian	Makonde	Uzbek
	Cornish	Malagasy	Volapük
	Croatian	Maltese	Vunjo
	Czech	Manx	Walser
	Danish	Meru	Welsh
	Dutch	Morisyen	Western Frisian
	Embu	North	Yoruba
	English	Ndebele	Zarma
	Esperanto	Northern Sami	Zulu
	Estonian	Norwegian Bokmål	
	Faroese	Norwegian	
	Filipino	Nynorsk	
	Finnish	Nyankole	
	French	Oromo	
	Friulian	Polish	
	Galician	Portuguese	
	Ganda	Prussian	
	German	Quechua	
	Gusii	Romanian	
	Hungarian	Romansh	
	Icelandic	Rombo	
	Igbo	Rundi	
	Inari Sami	Rwa	
	Indonesian	Samburu	
	Irish	Sango	
	Italian	Sangu	
	Jola-Fonyi	Scottish Gaelic	
	Kabuverdianu	Sena	
	Kabyle	Serbian	
	Kalaallisut	Shambala	
	Kalenjin	Shona	
	Kamba	Slovak	
	Kikuyu	Slovenian	
	Kinyarwanda	Soga	
	Koyra Chiini	Somali	

Open Type Features	aalt	Access All Alternates	ss03	Stylistic Set 3 (Straight f, r)
	ccmp	Glyph Composition / Decomposition	ss04	Stylistic Set 4 (Alternate r)
	dlig	Discretionary Ligatures	ss05	Stylistic Set 5 (Diagonal v)
	dnom	Denominators	ss06	Stylistic Set 6 (Supermax Set)
	frac	Fractions	ss07	Stylistic Set 7 (Alternate Accent Set)
	liga	Standard Ligatures	ss08	Stylistic Set 8 (Alternate 1, 7)
	locl	Localized Forms	ss09	Stylistic Set 9 (Alternate 2)
	nalt	Alternate Annotation Forms	ss10	Stylistic Set 10 (Thin Dashes)
	numr	Numerators	ss11	Stylistic Set 11 (Short Brackets)
	ordn	Ordinals	ss20	Stylistic Set 20 (Multiply)
	salt	Stylistic Alternates	subs	Subscript
	ss01	Stylistic Set 1 (Double-storey a)	sup	Superscript
	ss02	Stylistic Set 2 (Closed c)		

Codepage Please refer to the Technical Document

Copyright	No part of this publication may be reproduced, stored in a retrieval system, or transmitted, in any form or by any means, electronic, mechanical, photocopying, recording or otherwise, without the prior written consent of the publisher. This publication and the information herein is furnished AS IS, is subject to change without notice, and should not be construed as a commitment by Lineto GmbH.	Lineto GmbH assumes no responsibility for any errors or inaccuracies, makes no warranty of any kind (express, implied or statutory) with respect to this publication, and expressly disclaims any and all warranties of merchantability, fitness for particular purposes and non-infringement of third party rights. Brand or product names, used in this publication, are the trademarks or registered trademarks of their respective holders.
------------------	--	---