



Kleisch LL Var Regular

Font Format: OpenType TrueType (OpenType TTF)
Designer: Chiachi Chao (2020–2024)

Latin

K

Vietnamese

Ơ



OpenType Font Variations

OpenType Font Variations allow to incorporate multiple font faces within a font family into a single font.

Variation Axes

The set of axes that make up the font's variation space are defined by an array of variation axis records.

Tag	Name	Minimum	Default	Maximum
CONT	Contrast	50.0	50.0	100.0
wght	Weight	100.0	400.0	700.0

Variation Instances

The instance records define the position within the font's variation space.

Hamburg

Thin	Table	Tag	Name	Value
	fvar	CONT	Contrast	50.0
	fvar	wght	Weight	100.0
	MVAR	xhgt	x height	-10.0

Hamburg

Light	Table	Tag	Name	Value
	fvar	CONT	Contrast	50.0
	fvar	wght	Weight	300.0
	MVAR	xhgt	x height	-5.8

Hamburg

Regular	Table	Tag	Name	Value
	fvar	CONT	Contrast	50.0
	fvar	wght	Weight	400.0

Hamburg

Medium	Table	Tag	Name	Value
	fvar	CONT	Contrast	50.0
	fvar	wght	Weight	500.0

Hamburg

Bold	Table	Tag	Name	Value
	fvar	CONT	Contrast	50.0
	fvar	wght	Weight	700.0



Glyph Map

All 1148 glyphs of Kleisch LL Var Regular in physical order.

☐				!	"	#	\$	%	&	'	()	*	+	,	-	.	/	0
1	2	3	4	5	6	7	8	9	:	;	<	=	>	?	@	A	B	C	D
E	F	G	H	I	J	K	L	M	N	O	P	Q	R	S	T	U	V	W	X
Y	Z	[\]	^	_	`	a	b	c	d	e	f	g	h	i	j	k	l
m	n	o	p	q	r	s	t	u	v	w	x	y	z	{		}	~		i
ç	£	¤	¥	¦	§	¨	©	ª	«	¬		®	¯	°	±	²	³	´	µ
¶	·	¸	¹	º	»	¼	½	¾	¿	À	Á	Â	Ã	Ä	Å	Æ	Ç	È	É
Ê	Ë	Ì	Í	Î	Ï	Ð	Ñ	Ò	Ó	Ô	Õ	Ö	×	Ø	Ù	Ú	Û	Ü	Ý
Þ	ß	à	á	â	ã	ä	å	æ	ç	è	é	ê	ë	ì	í	î	ï	ð	ñ
ò	ó	ô	õ	ö	÷	ø	ù	ú	û	ü	ý	þ	ÿ	Ā	ā	Ă	ă	Ą	ą
Ć	ć	Ĉ	ĉ	Č	č	Ď	ď	Đ	đ	Ē	ē	Ĕ	ĕ	É	é	Ě	ě	Ę	ę
Ė	ė	Ĝ	ĝ	Ğ	ğ	Ġ	ġ	Ĥ	ĥ	Ħ	ħ	Ĩ	ĩ	Ī	ī	Ĭ	ĭ	İ	ı
Į	į	Ĳ	ĳ	Ĵ	ĵ	Ķ	ķ	κ	Ł	ł	Ł	ł	Ł	ł	Ł	ł	Ł	ł	Ł
ł	Ń	ń	Ņ	ņ	Ň	ň	Ŋ	ŋ	Ō	ō	Ŏ	ö	Ŏ	ö	Œ	œ	Ŕ	ŕ	
Ŗ	ŗ	Ř	ř	Ś	ś	Ŝ	ŝ	Ş	ş	Š	š	Ţ	ţ	Ť	ť	Ŧ	ŧ	Ũ	ũ
Ū	ū	Ŭ	ŭ	Ű	ű	Ų	ų	Ŵ	ŵ	Ŷ	ŷ	Ÿ	Ž	ž	Ż	ż	Ž	ž	Ž
ž	ƒ	ƒ	Ō	ó	Ū	ú	Ă	ă	Ŭ	ű	Ğ	ğ	Ų	ų	Á	á	Æ	æ	Ø
ø	Ş	ş	Ţ	ţ	Ȳ	ȳ	Ј	ˆ	˘	˙	˚	˛	˜	˝	˞	˟	ˠ	ˡ	ˢ
-	ˣ	ˤ	˥	˦	˧	˨	˩	˪	˫	ˬ	˭	ˮ	˯	˰	˱	˲	˳	˴	˵
Δ	Ω	μ	π	Β	Β	β	Đ	đ	Đ	đ	Ƒ	Ƒ	Η	η	Λ	λ	Μ	μ	Ν
ν	Π	π	Σ	σ	Σ	σ	Τ	τ	Ẁ	ẁ	Ẃ	ẃ	Ẅ	ẅ	Ẇ	ẇ	Ẉ	ẉ	Ẋ
ẏ	Ẑ	ẑ	Ẓ	ẓ	Ẕ	ẕ	ẖ	ẗ	ẘ	ẙ	ẚ	ẛ	ẜ	ẝ	ẞ	ẟ	Ạ	ạ	Ả
ả	Ẹ	ẹ	Ẻ	ẻ	Ẽ	ẽ	Ẻ	ẻ	Ẻ	ẻ	Ẻ	ẻ	Ẻ	ẻ	Ẻ	ẻ	Ẻ	ẻ	Ẻ
ị	Ọ	ọ	Ỏ	ỏ	Ổ	ổ	Ổ	ổ	Ổ	ổ	Ổ	ổ	Ộ	ộ	Ổ	ổ	Ỡ	ờ	Ỡ
ỗ	Ỗ	ỗ	Ỗ	ỗ	Ự	ự	Ự	ự	Ự	ự	Ự	ự	Ự	ự	Ự	ự	Ự	ự	Ỡ
ỳ	Ỳ	ỳ	Ỳ	ỳ	Ỵ	ỵ													-
-	-	-	—	—	‘	’	,	“	”	„	†	‡	•	…		%	'	"	<
>	/		0	4	5	6	7	8	9	0	1	2	3	4	5	6	7	8	9
¢	₩	₪	₫	€	₹	₺	₱	₳	₪	₱	₳	₪	₳	₪	₳	₪	₳	₪	₳



1/9	1/10	1/3	2/3	1/5	2/5	3/5	4/5	1/6	5/6	1/8	3/8	5/8	7/8	1/	I	II	III	IV	V
VI	VII	VIII	IX	X	XI	XII	L	C	D	M	i	ii	iii	iv	v	vi	vii	viii	ix
x	xi	xii	l	c	d	m	%	←	↑	→	↓	↔	↕	↖	↗	↘	↙	∂	Δ
Π	Σ	−	/	·	√	∞	∫	≈	≠	≤	≥	◇	◦		F	⊙	fi	fl	
,	;	?	∕	ˆ	i	Ł	ł	`	'	^	~	˘	[]	o	1	2	3	4
5	6	7	8	9	o	1	2	3	4	5	6	7	8	9		o	1	2	3
4	5	6	7	8	9		\$,	.	0	1	2	3	4	5	6	7	8	9
:	;	¢	£	¥	f	฿			¢	₩	₪	₫	€	₱	₹	₺	₳	₪	₪
€	฿	№	:	F	O	1	2	3	4	5	6	7	8	9		í	—	&	A
B	C	D	E	F	G	H	I	J	K	L	M	N	O	P	Q	R	S	T	U
V	W	X	Y	Z	ß	À	Á	Â	Ã	Ä	Å	Æ	Ç	È	É	Ê	Ë	Ì	Í
Î	Ï	Ð	Ñ	Ò	Ó	Ô	Õ	Ö	Ø	Ù	Ú	Û	Ü	Ý	Þ	ÿ	Ā	Ă	Ą
Ć	Ĉ	Ċ	Č	Ď	Đ	Ē	Ĕ	È	Ě	Ė	Ĝ	Ğ	Ġ	Ģ	Ĥ	Ħ	Ĩ	Ī	Ĵ
ı	ı	IJ	Ĵ	ķ	K	Ł	ł	ł	L	Ł	ń	ņ	ņ	Ń	Ņ	ō	ö	ő	œ
Ŕ	Ŗ	Ř	Ś	Ŝ	Ş	Š	Ţ	Ť	ƒ	Ũ	Ū	Ŭ	Ů	Ű	Ų	Ŵ	Ŷ	Ž	ž
Ž	S	Ó	Ū	Ă	Ŭ	Ğ	Q	Á	É	Ó	Ş	Ţ	Ÿ	J	˘	ˆ	˙	˚	˛
˜	˘	˚	˛	˜	-	˘	˙	˚	˛	˜	˘	˙	˚	˛	˜	˘	˙	˚	˛
Ĥ	Ħ	Ī	Ĵ	ķ	K	Ł	ł	ł	L	Ł	ń	ņ	ņ	Ń	Ņ	ō	ö	ő	œ
Ŕ	Ŗ	Ř	Ś	Ŝ	Ş	Š	Ţ	Ť	ƒ	Ũ	Ū	Ŭ	Ů	Ű	Ų	Ŵ	Ŷ	Ž	ž
Ž	S	Ó	Ū	Ă	Ŭ	Ğ	Q	Á	É	Ó	Ş	Ţ	Ÿ	J	˘	ˆ	˙	˚	˛
˜	˘	˚	˛	˜	-	˘	˙	˚	˛	˜	˘	˙	˚	˛	˜	˘	˙	˚	˛
Ĥ	Ħ	Ī	Ĵ	ķ	K	Ł	ł	ł	L	Ł	ń	ņ	ņ	Ń	Ņ	ō	ö	ő	œ
Ŕ	Ŗ	Ř	Ś	Ŝ	Ş	Š	Ţ	Ť	ƒ	Ũ	Ū	Ŭ	Ů	Ű	Ų	Ŵ	Ŷ	Ž	ž
Ž	S	Ó	Ū	Ă	Ŭ	Ğ	Q	Á	É	Ó	Ş	Ţ	Ÿ	J	˘	ˆ	˙	˚	˛
˜	˘	˚	˛	˜	-	˘	˙	˚	˛	˜	˘	˙	˚	˛	˜	˘	˙	˚	˛
Ĥ	Ħ	Ī	Ĵ	ķ	K	Ł	ł	ł	L	Ł	ń	ņ	ņ	Ń	Ņ	ō	ö	ő	œ
Ŕ	Ŗ	Ř	Ś	Ŝ	Ş	Š	Ţ	Ť	ƒ	Ũ	Ū	Ŭ	Ů	Ű	Ų	Ŵ	Ŷ	Ž	ž
Ž	S	Ó	Ū	Ă	Ŭ	Ğ	Q	Á	É	Ó	Ş	Ţ	Ÿ	J	˘	ˆ	˙	˚	˛
˜	˘	˚	˛	˜	-	˘	˙	˚	˛	˜	˘	˙	˚	˛	˜	˘	˙	˚	˛
Ĥ	Ħ	Ī	Ĵ	ķ	K	Ł	ł	ł	L	Ł	ń	ņ	ņ	Ń	Ņ	ō	ö	ő	œ
Ŕ	Ŗ	Ř	Ś	Ŝ	Ş	Š	Ţ	Ť	ƒ	Ũ	Ū	Ŭ	Ů	Ű	Ų	Ŵ	Ŷ	Ž	ž
Ž	S	Ó	Ū	Ă	Ŭ	Ğ	Q	Á	É	Ó	Ş	Ţ	Ÿ	J	˘	ˆ	˙	˚	˛
˜	˘	˚	˛	˜	-	˘	˙	˚	˛	˜	˘	˙	˚	˛	˜	˘	˙	˚	˛
Ĥ	Ħ	Ī	Ĵ	ķ	K	Ł	ł	ł	L	Ł	ń	ņ	ņ	Ń	Ņ	ō	ö	ő	œ
Ŕ	Ŗ	Ř	Ś	Ŝ	Ş	Š	Ţ	Ť	ƒ	Ũ	Ū	Ŭ	Ů	Ű	Ų	Ŵ	Ŷ	Ž	ž
Ž	S	Ó	Ū	Ă	Ŭ	Ğ	Q	Á	É	Ó	Ş	Ţ	Ÿ	J	˘	ˆ	˙	˚	˛
˜	˘	˚	˛	˜	-	˘	˙	˚	˛	˜	˘	˙	˚	˛	˜	˘	˙	˚	˛
Ĥ	Ħ	Ī	Ĵ	ķ	K	Ł	ł	ł	L	Ł	ń	ņ	ņ	Ń	Ņ	ō	ö	ő	œ
Ŕ	Ŗ	Ř	Ś	Ŝ	Ş	Š	Ţ	Ť	ƒ	Ũ	Ū	Ŭ	Ů	Ű	Ų	Ŵ	Ŷ	Ž	ž
Ž	S	Ó	Ū	Ă	Ŭ	Ğ	Q	Á	É	Ó	Ş	Ţ	Ÿ	J	˘	ˆ	˙	˚	˛
˜	˘	˚	˛	˜	-	˘	˙	˚	˛	˜	˘	˙	˚	˛	˜	˘	˙	˚	˛
Ĥ	Ħ	Ī	Ĵ	ķ	K	Ł	ł	ł	L	Ł	ń	ņ	ņ	Ń	Ņ	ō	ö	ő	œ
Ŕ	Ŗ	Ř	Ś	Ŝ	Ş	Š	Ţ	Ť	ƒ	Ũ	Ū	Ŭ	Ů	Ű	Ų	Ŵ	Ŷ	Ž	ž
Ž	S	Ó	Ū	Ă	Ŭ	Ğ	Q	Á	É	Ó	Ş	Ţ	Ÿ	J	˘	ˆ	˙	˚	˛
˜	˘	˚	˛	˜	-	˘	˙	˚	˛	˜	˘	˙	˚	˛	˜	˘	˙	˚	˛
Ĥ	Ħ	Ī	Ĵ	ķ	K	Ł	ł	ł	L	Ł	ń	ņ	ņ	Ń	Ņ	ō	ö	ő	œ
Ŕ	Ŗ	Ř	Ś	Ŝ	Ş	Š	Ţ	Ť	ƒ	Ũ	Ū	Ŭ	Ů	Ű	Ų	Ŵ	Ŷ	Ž	ž
Ž	S	Ó	Ū	Ă	Ŭ	Ğ	Q	Á	É	Ó	Ş	Ţ	Ÿ	J	˘	ˆ	˙	˚	˛
˜	˘	˚	˛	˜	-	˘	˙	˚	˛	˜	˘	˙	˚	˛	˜	˘	˙	˚	˛
Ĥ	Ħ	Ī	Ĵ	ķ	K	Ł	ł	ł	L	Ł	ń	ņ	ņ	Ń	Ņ	ō	ö	ő	œ
Ŕ	Ŗ	Ř	Ś	Ŝ	Ş	Š	Ţ	Ť	ƒ	Ũ	Ū	Ŭ	Ů	Ű	Ų	Ŵ	Ŷ	Ž	ž
Ž	S	Ó	Ū	Ă	Ŭ	Ğ	Q	Á	É	Ó	Ş	Ţ	Ÿ	J	˘	ˆ	˙	˚	˛
˜	˘	˚	˛	˜	-	˘	˙	˚	˛	˜	˘	˙	˚	˛	˜	˘	˙	˚	˛
Ĥ	Ħ	Ī	Ĵ	ķ	K	Ł	ł	ł	L	Ł	ń	ņ	ņ	Ń	Ņ	ō	ö	ő	œ
Ŕ	Ŗ	Ř	Ś	Ŝ	Ş	Š	Ţ	Ť	ƒ	Ũ	Ū	Ŭ	Ů	Ű	Ų	Ŵ	Ŷ	Ž	ž
Ž	S	Ó	Ū	Ă	Ŭ	Ğ	Q	Á	É	Ó	Ş	Ţ	Ÿ	J	˘	ˆ	˙	˚	˛
˜	˘	˚	˛	˜	-	˘	˙	˚	˛	˜	˘	˙	˚	˛	˜	˘	˙	˚	˛
Ĥ	Ħ	Ī	Ĵ	ķ	K	Ł	ł	ł	L	Ł	ń	ņ	ņ	Ń	Ņ	ō	ö	ő	œ
Ŕ	Ŗ	Ř	Ś	Ŝ	Ş	Š	Ţ	Ť	ƒ	Ũ	Ū	Ŭ	Ů	Ű	Ų	Ŵ	Ŷ	Ž	ž
Ž	S	Ó	Ū	Ă	Ŭ	Ğ	Q	Á	É	Ó	Ş	Ţ	Ÿ	J	˘	ˆ	˙	˚	˛
˜	˘	˚	˛	˜	-	˘	˙	˚	˛	˜	˘	˙	˚	˛	˜	˘	˙	˚	˛
Ĥ	Ħ	Ī	Ĵ	ķ	K	Ł	ł	ł	L	Ł	ń	ņ	ņ	Ń	Ņ	ō	ö	ő	œ
Ŕ	Ŗ	Ř	Ś	Ŝ	Ş	Š	Ţ	Ť	ƒ	Ũ	Ū	Ŭ	Ů	Ű	Ų	Ŵ	Ŷ	Ž	ž
Ž	S	Ó	Ū	Ă	Ŭ	Ğ	Q	Á	É	Ó	Ş	Ţ	Ÿ	J	˘	ˆ	˙	˚	˛
˜	˘	˚	˛	˜	-	˘	˙	˚	˛	˜	˘	˙	˚	˛	˜	˘	˙	˚	˛
Ĥ	Ħ	Ī	Ĵ	ķ	K	Ł	ł	ł	L	Ł	ń	ņ	ņ	Ń	Ņ	ō	ö	ő	œ
Ŕ	Ŗ	Ř	Ś	Ŝ	Ş	Š	Ţ	Ť	ƒ	Ũ	Ū	Ŭ	Ů	Ű	Ų	Ŵ	Ŷ	Ž	ž
Ž	S	Ó	Ū	Ă	Ŭ	Ğ	Q	Á	É	Ó	Ş	Ţ	Ÿ	J	˘	ˆ	˙	˚	˛
˜	˘	˚	˛	˜	-	˘	˙	˚	˛	˜	˘	˙	˚	˛	˜	˘	˙	˚	˛
Ĥ	Ħ	Ī	Ĵ	ķ	K	Ł	ł	ł	L	Ł	ń	ņ	ņ	Ń	Ņ	ō	ö	ő	œ
Ŕ	Ŗ	Ř	Ś	Ŝ	Ş	Š	Ţ	Ť	ƒ	Ũ	Ū	Ŭ	Ů	Ű	Ų	Ŵ	Ŷ	Ž	ž
Ž	S	Ó	Ū	Ă	Ŭ	Ğ	Q	Á	É	Ó	Ş	Ţ	Ÿ	J	˘	ˆ	˙	˚	˛
˜	˘	˚	˛	˜	-	˘	˙	˚	˛	˜	˘	˙	˚	˛	˜	˘	˙	˚	˛
Ĥ	Ħ	Ī	Ĵ	ķ	K	Ł	ł	ł	L	Ł	ń	ņ	ņ	Ń	Ņ	ō	ö	ő	œ
Ŕ	Ŗ	Ř	Ś	Ŝ	Ş	Š	Ţ	Ť	ƒ	Ũ	Ū	Ŭ	Ů	Ű	Ų	Ŵ	Ŷ	Ž	ž
Ž	S	Ó	Ū	Ă	Ŭ	Ğ	Q	Á	É	Ó	Ş	Ţ	Ÿ	J	˘	ˆ	˙	˚	˛
˜	˘	˚	˛	˜	-	˘	˙	˚	˛	˜	˘	˙	˚	˛	˜	˘	˙	˚	˛
Ĥ	Ħ	Ī	Ĵ	ķ	K	Ł	ł	ł	L	Ł	ń	ņ	ņ	Ń	Ņ	ō	ö	ő	œ
Ŕ	Ŗ	Ř	Ś	Ŝ	Ş	Š	Ţ	Ť	ƒ	Ũ	Ū	Ŭ	Ů	Ű	Ų	Ŵ	Ŷ	Ž	ž
Ž	S	Ó	Ū	Ă	Ŭ	Ğ	Q	Á	É	Ó	Ş	Ţ	Ÿ	J	˘	ˆ	˙	˚	˛
˜	˘	˚	˛	˜	-	˘	˙	˚	˛	˜	˘	˙	˚	˛	˜	˘	˙	˚	˛
Ĥ	Ħ	Ī	Ĵ	ķ	K	Ł	ł	ł	L	Ł	ń	ņ	ņ	Ń	Ņ	ō	ö	ő	œ
Ŕ	Ŗ	Ř	Ś	Ŝ	Ş	Š	Ţ	Ť	ƒ	Ũ	Ū	Ŭ	Ů	Ű	Ų	Ŵ	Ŷ	Ž	ž
Ž	S	Ó	Ū	Ă	Ŭ	Ğ	Q	Á	É	Ó	Ş	Ţ	Ÿ	J	˘	ˆ	˙	˚	˛
˜	˘	˚	˛	˜	-	˘	˙	˚	˛	˜	˘	˙	˚	˛	˜	˘	˙	˚	˛
Ĥ	Ħ	Ī	Ĵ	ķ	K	Ł	ł	ł	L	Ł	ń	ņ	ņ	Ń	Ņ	ō	ö	ő	œ
Ŕ	Ŗ	Ř	Ś	Ŝ	Ş	Š	Ţ	Ť	ƒ	Ũ	Ū	Ŭ	Ů	Ű	Ų	Ŵ	Ŷ	Ž	ž
Ž	S	Ó	Ū	Ă	Ŭ	Ğ	Q	Á	É	Ó	Ş	Ţ	Ÿ	J	˘	ˆ	˙	˚	˛
˜	˘	˚	˛	˜	-	˘	˙	˚	˛	˜	˘	˙	˚	˛	˜	˘	˙	˚	˛
Ĥ	Ħ	Ī	Ĵ	ķ	K	Ł													



All encoded characters should be accessible with every unicode capable application. For details about Unicode Blocks visit the Unicode Website.

Encoded Characters

Basic Latin

Block from 0000 to 007F

0000	000D	0020	0021	0022	0023	0024	0025	0026	0027	0028	0029	002A	002B	002C	002D	002E	002F	0030	0031
			!	"	#	\$	%	&	'	()	*	+	,	-	.	/	0	1
0032	0033	0034	0035	0036	0037	0038	0039	003A	003B	003C	003D	003E	003F	0040	0041	0042	0043	0044	0045
2	3	4	5	6	7	8	9	:	;	<	=	>	?	@	A	B	C	D	E
0046	0047	0048	0049	004A	004B	004C	004D	004E	004F	0050	0051	0052	0053	0054	0055	0056	0057	0058	0059
F	G	H	I	J	K	L	M	N	O	P	Q	R	S	T	U	V	W	X	Y
005A	005B	005C	005D	005E	005F	0060	0061	0062	0063	0064	0065	0066	0067	0068	0069	006A	006B	006C	006D
Z	[\]	^	_	`	a	b	c	d	e	f	g	h	i	j	k	l	m
006E	006F	0070	0071	0072	0073	0074	0075	0076	0077	0078	0079	007A	007B	007C	007D	007E			
n	o	p	q	r	s	t	u	v	w	x	y	z	{		}	~			

Latin-1 Supplement

Block from 0080 to 00FF

00A0	00A1	00A2	00A3	00A4	00A5	00A6	00A7	00A8	00A9	00AA	00AB	00AC	00AD	00AE	00AF	00B0	00B1	00B2	00B3
	ı	ç	£	¤	¥	¦	§	¨	©	ª	«	¬		®	¯	°	±	²	³
00B4	00B5	00B6	00B7	00B8	00B9	00BA	00BB	00BC	00BD	00BE	00BF	00C0	00C1	00C2	00C3	00C4	00C5	00C6	00C7
´	µ	¶	·	¸	¹	º	»	¼	½	¾	¿	À	Á	Â	Ã	Ä	Å	Æ	Ç
00C8	00C9	00CA	00CB	00CC	00CD	00CE	00CF	00D0	00D1	00D2	00D3	00D4	00D5	00D6	00D7	00D8	00D9	00DA	00DB
È	É	Ê	Ë	Ì	Í	Î	Ï	Ð	Ñ	Ò	Ó	Ô	Õ	Ö	×	Ø	Ù	Ú	Û
00DC	00DD	00DE	00DF	00E0	00E1	00E2	00E3	00E4	00E5	00E6	00E7	00E8	00E9	00EA	00EB	00EC	00ED	00EE	00EF
Ü	Ý	Þ	ß	à	á	â	ã	ä	å	æ	ç	è	é	ê	ë	ì	í	î	ï
00F0	00F1	00F2	00F3	00F4	00F5	00F6	00F7	00F8	00F9	00FA	00FB	00FC	00FD	00FE	00FF				
ð	ñ	ò	ó	ô	õ	ö	÷	ø	ù	ú	û	ü	ý	þ	ÿ				

Latin Extended-A

Block from 0100 to 017F

0100	0101	0102	0103	0104	0105	0106	0107	0108	0109	010A	010B	010C	010D	010E	010F	0110	0111	0112	0113
Ā	ā	Ă	ă	Ą	ą	Ć	ć	Ĉ	ĉ	Č	č	Ď	ď	Đ	đ	Ē	ē		
0114	0115	0116	0117	0118	0119	011A	011B	011C	011D	011E	011F	0120	0121	0122	0123	0124	0125	0126	0127
Ĕ	ĕ	Ė	ė	Ę	ę	Ě	ě	Ĝ	ĝ	Ğ	ğ	Ġ	ġ	Ģ	ģ	Ĥ	ĥ	Ħ	ħ
0128	0129	012A	012B	012C	012D	012E	012F	0130	0131	0132	0133	0134	0135	0136	0137	0138	0139	013A	013B
Ĩ	ĩ	Ī	ī	Ĭ	ĭ	Į	į	İ	ı	IJ	ij	Ĵ	ĵ	Ķ	ķ	κ	Í	í	Ļ
013C	013D	013E	013F	0140	0141	0142	0143	0144	0145	0146	0147	0148	0149	014A	014B	014C	014D	014E	014F
Ļ	ļ	Ł	ł	Ł	ł	Ń	ń	Ņ	ņ	Ň	ň	ň	Ŋ	ŋ	Ō	ō	Ŏ	ö	



0150	0151	0152	0153	0154	0155	0156	0157	0158	0159	015A	015B	015C	015D	015E	015F	0160	0161	0162	0163
Ŏ	ŏ	Œ	œ	Ŕ	ŕ	Ŗ	ŗ	Ř	ř	Ś	ś	Ŝ	ŝ	Ş	ş	Š	š	Ţ	ţ
0164	0165	0166	0167	0168	0169	016A	016B	016C	016D	016E	016F	0170	0171	0172	0173	0174	0175	0176	0177
Ť	ť	Ʀ	ƣ	Ũ	ũ	Ū	ū	Ů	ů	Ű	ű	Ŭ	ŭ	Ū	ū	Ŵ	ŵ	Ŷ	ŷ
0178	0179	017A	017B	017C	017D	017E	017F												
ÿ	Ž	ž	Ẑ	ẑ	Ẓ	ẓ	f												

Latin Extended-B

Block from 0180 to 024F

0192	01A0	01A1	01AF	01B0	01CD	01CE	01D3	01D4	01E6	01E7	01EA	01EB	01FA	01FB	01FC	01FD	01FE	01FF	0218
f	Ŏ	ŏ	Ū	ū	Ǻ	ǻ	Ǫ	ǫ	Ǿ	ǿ	Ɔ	ƣ	Ǻ	ǻ	Ǽ	ǽ	Ǿ	ǿ	Ş
0219	021A	021B	0232	0233	0237														
ş	Ţ	ţ	Ȳ	ȳ	Ƶ														

Spacing Modifier Letters

Block from 02B0 to 02FF

02C6	02C7	02D8	02D9	02DA	02DB	02DC	02DD
^	v	˘	˙	˚	˛	˜	˝

Combining Diacritical Marks

Block from 0300 to 036F

0300	0301	0302	0303	0304	0306	0307	0308	0309	030A	030B	030C	0312	0313	0323	0326	0327	0328	032E	0331
ˆ	ˊ	ˆ	˜	ˉ	˘	˙	˚	˛	˜	˝	˘	˙	˚	˛	˜	˝	˘	˙	˚
0335	0337	0338																	
ˉ	ˊ	ˋ																	

Greek and Coptic

Block from 0370 to 03FF

0387	0394	03A9	03BC	03C0
·	Δ	Ω	μ	π

Thai

Block from 0E00 to 0E7F

0E3F
฿

Latin Extended Additional

Block from 1E00 to 1EFF

1E02	1E03	1E0A	1E0B	1E10	1E11	1E1E	1E1F	1E24	1E25	1E36	1E37	1E40	1E41	1E44	1E45	1E56	1E57	1E60	1E61
Ā	ā	Ď	ď	Ḑ	ḑ	Ḟ	ḟ	Ḥ	ḥ	Ḍ	ḍ	Ḣ	ḣ	Ḥ	ḥ	Ḣ	ḣ	Ḥ	ḥ



1E62	1E63	1E6A	1E6B	1E80	1E81	1E82	1E83	1E84	1E85	1E97	1E9E	1EA0	1EA1	1EA2	1EA3	1EA4	1EA5	1EA6	1EA7
Ş	ş	Ț	ț	Ẁ	ẁ	Ẃ	ẃ	Ẅ	ẅ	ț	ß	À	à	Ả	ả	Á	á	Â	â
1EA8	1EA9	1EAA	1EAB	1EAC	1EAD	1EAE	1EAF	1EB0	1EB1	1EB2	1EB3	1EB4	1EB5	1EB6	1EB7	1EB8	1EB9	1EBA	1EBB
Ă	ă	Ã	ã	Â	â	Ǻ	ǻ	Ǽ	ǽ	Ǻ	ǻ	Ǽ	ǽ	Ǻ	ǻ	Ẹ	ẹ	Ẻ	ẻ
1EBC	1EBD	1EBE	1EBF	1EC0	1EC1	1EC2	1EC3	1EC4	1EC5	1EC6	1EC7	1EC8	1EC9	1ECA	1ECB	1ECC	1ECD	1ECE	1ECF
Ẽ	ẽ	Ế	ế	Ê	ê	Ễ	ễ	Ễ	ễ	Ệ	ệ	Ỉ	ỉ	Ị	ị	Ọ	ọ	Ỏ	ỏ
1ED0	1ED1	1ED2	1ED3	1ED4	1ED5	1ED6	1ED7	1ED8	1ED9	1EDA	1EDB	1EDC	1EDD	1EDE	1EDF	1EE0	1EE1	1EE2	1EE3
Ó	ó	Ô	ô	Õ	õ	Ỗ	ỗ	Ộ	ộ	Ớ	ớ	Ờ	ờ	Ở	ở	Ỡ	ỡ	Ợ	ợ
1EE4	1EE5	1EE6	1EE7	1EE8	1EE9	1EEA	1EEB	1EEC	1EED	1EEE	1EEF	1EF0	1EF1	1EF2	1EF3	1EF4	1EF5	1EF6	1EF7
Ụ	ụ	Ủ	ủ	Ứ	ứ	Ừ	ừ	Ủ	ủ	Ỡ	ỡ	Ự	ự	Ỡ	ỡ	Ỡ	ỡ	Ỡ	ỡ
1EF8	1EF9																		
Ỡ	ỡ																		

General Punctuation

Block from 2000 to 206F

2000	2001	2002	2003	2004	2005	2006	2007	2008	2009	200A	200B	2010	2011	2012	2013	2014	2015	2018	2019
												-	-	-	-	—	—	‘	’
201A	201C	201D	201E	2020	2021	2022	2026	202F	2030	2032	2033	2039	203A	2044	205F				
,	“	”	„	†	‡	•	…		‰	'	”	<	>	/					

Superscripts and Subscripts

Block from 2070 to 209F

2070	2074	2075	2076	2077	2078	2079	2080	2081	2082	2083	2084	2085	2086	2087	2088	2089
0	4	5	6	7	8	9	0	1	2	3	4	5	6	7	8	9

Currency Symbols

Block from 20A0 to 20CF

20A1	20A9	20AA	20AB	20AC	20B1	20B4	20B5	20B9	20BA	20BD	20BE	20BF
₪	₩	₪	₪	€	₪	₪	₪	₪	₪	₪	₪	₪

Letterlike Symbols

Block from 2100 to 214F

2113	2116	2117	2122	2126	212E
ℓ	Nº	Ⓟ	™	Ω	e

Number Forms

Block from 2150 to 218F

2150	2151	2152	2153	2154	2155	2156	2157	2158	2159	215A	215B	215C	215D	215E	215F	2160	2161	2162	2163
1/7	1/9	1/10	1/3	2/3	1/5	2/5	3/5	4/5	1/6	5/6	1/8	3/8	5/8	7/8	1/	I	II	III	IV



2164	2165	2166	2167	2168	2169	216A	216B	216C	216D	216E	216F	2170	2171	2172	2173	2174	2175	2176	2177
V	VI	VII	VIII	IX	X	XI	XII	L	C	D	M	i	ii	iii	iv	v	vi	vii	viii
2178	2179	217A	217B	217C	217D	217E	217F	2189											
ix	x	xi	xii	l	c	d	m	⅔											

Arrows

Block from 2190 to 21FF

2190	2191	2192	2193	2194	2195	2196	2197	2198	2199
←	↑	→	↓	↔	↕	↖	↗	↘	↙

Mathematical Operators

Block from 2200 to 22FF

2202	2206	220F	2211	2212	2215	2219	221A	221E	222B	2248	2260	2264	2265
∂	Δ	Π	Σ	−	/	·	√	∞	∫	≈	≠	≤	≥

Geometric Shapes

Block from 25A0 to 25FF

25CA	25E6
◇	◦

CJK Symbols and Punctuation

Block from 3000 to 303F

3000

Private Use Area

Block from E000 to F8FF

F100	F8FF
F	🌀

Alphabetic Presentation Forms

Block from FB00 to FB4F

FB01	FB02
fi	fl

Arabic Presentation Forms-B

Block from FE70 to FEFF

FEFF



Halfwidth and Fullwidth Forms

Block from FF00 to FFEF

FF0C	FF1B	FF1F
,	;	?

Miscellaneous Symbols and Pictographs

Block from 1F300 to 1F5FF

1F408




OpenType Layout Features

For details about OpenType Layout Features see the [OpenType Layout tag registry](#).

Substitution Features

2₂²2²

Access All Alternates

This feature makes all variations of a selected character accessible.

B̂

Small Capitals From Capitals

This feature turns capital characters into small capitals.

fi

Standard Ligatures

Replaces a sequence of glyphs with a single glyph which is preferred for typographic purposes. This feature covers the ligatures which the designer/manufacturer judges should be used in normal conditions.

619

Oldstyle Figures

This feature changes selected figures from the default lining style to oldstyle form.

123

Tabular Figures

Replaces figure glyphs set on proportional widths with corresponding glyphs set on uniform (tabular) widths.

7/

Numerators

Replaces selected figures which precede a slash with numerator figures, and replaces the typographic slash with the fraction slash.

7/8

Fractions

Replaces figures separated by a slash with 'common' (diagonal) fractions.

X₂

Subscript

The "subs" feature may replace a default glyph with a subscript glyph.

{G}

Case-Sensitive Forms

Shifts various punctuation marks up to a position that works better with all-capital sequences or sets of lining figures; also changes oldstyle figures to lining figures.

b̂

Small Capitals

This feature turns lowercase characters into small capitals. This corresponds to the common SC font layout. It is generally used for display lines set in Large and small caps, such as titles. Forms related to small capitals, such as oldstyle figures, may be included.

ظبغ

Contextual Alternates

In specified situations, replaces default glyphs with alternate forms which provide better joining behavior.

st

Discretionary Ligatures

Replaces a sequence of glyphs with a single glyph which is preferred for typographic purposes. This feature covers those ligatures which may be used for special effect, at the user's preference.

123

Lining Figures

This feature changes selected figures from oldstyle to the default lining form.

0

Slashed Zero

Some fonts contain both a default form of zero, and an alternative form which uses a diagonal slash through the counter. This feature allows the user to change from the default 0 to a slashed form.

/8

Denominators

Replaces selected figures which follow a slash with denominator figures.

X²

Superscript

Replaces lining or oldstyle figures with superior figures (primarily for footnote indication), and may replace lowercase letters with superior letters (primarily for abbreviated French titles).

1st

Ordinals

Replaces default alphabetic glyphs with the corresponding ordinal forms for use after figures.

§§

Localized Forms

This feature enables localized forms of glyphs to be substituted for default forms.



GG

Stylistic Alternates

Many fonts contain alternate glyph designs for a purely esthetic effect; these don't always fit into a clear category like swash or historical. This feature replaces the default forms with the stylistic alternates.

[2]

**Stylistic Set 2
(Alternate G)**

[5]

**Stylistic Set 5
(Alternate Registered)**

[20]

**Stylistic Set 20
(Multiply)**

Replaces 'x' with the multiply sign when placed between two numbers..

**Full Widths**

Replaces glyphs set on other widths with glyphs set on full (usually em) widths.

**Ornaments**

This feature gives the user access to ornament glyphs (e.g. fleurons, dingbats and border elements) in the font.

[1]

**Stylistic Set 1
(Alternate C)**

Glyphs in stylistic sets may be designed to harmonise visually, interact in particular ways, or otherwise work together.

[3]

**Stylistic Set 3
(Alternate R)**

[19]

**Stylistic Set 19
(Swiss Franc)**

Replaces 'CHF' / 'chf' with the Swiss Franc sign when placed before or after a number.

T·r

Glyph Composition / Decomposition

To minimize the number of glyph alternates, it is sometimes desired to decompose a character into two glyphs. Additionally, it may be preferable to compose two characters into a single glyph for better glyph processing. This feature permits such composition/decomposition.

1⊕

Alternate Annotation Forms

Replaces default glyphs with various notational forms (e.g. glyphs placed in open or solid circles, squares, parentheses, diamonds or rounded boxes).

t→t

Required Contextual Alternates

Positioning Features

T⇌O

Kerning

Adjusts amount of space between glyphs, generally to provide optically consistent spacing between glyphs.

**Mark to Mark Positioning**

Positions marks with respect to other marks. Required in various non-Latin scripts like Arabic.

⊕

Mark Positioning

Positions mark glyphs with respect to base glyphs.



All alternates are accessible with OpenType layout feature capable applications. If not specified, the feature is registered for all language systems.

All Alternates

bB Small Capitals

Í	À	B	C	D	E	F	G	H	I	J	K	L	M	N	O	P	Q	R	S
T	U	V	W	X	Y	Z	ß	À	Á	Â	Ã	Ä	Å	Æ	Ç	È	É	Ê	Ë
Ì	Í	Î	Ï	Ð	Ñ	Ò	Ó	Ô	Õ	Ö	Ø	Ù	Ú	Û	Ü	Ý	Þ	ÿ	Ā
Ǻ	Ą	Ć	Ĉ	Č	Ď	Đ	Ē	Ĕ	È	Ě	Ę	Ė	Ĝ	Ğ	Ġ	Ģ	Ĥ	Ħ	Ĩ
Ī	Ĭ	Į	İ	IJ	Ĵ	Ꞁ	ꞁ	Ꞃ	ꞃ	Ꞅ	ꞅ	Ꞇ	ꞇ	ꞈ	꞉	꞊	Ꞌ	ꞌ	Ɥ
Ŏ	Œ	Ŕ	Ŗ	Ř	Ś	Ŝ	Ş	Š	Ț	Ț	ƒ	Ũ	Ū	Ŭ	Ů	Ű	Ų	Ŵ	Ŷ
Ž	Ż	Ž	ſ	Ŏ	Ű	Ǻ	ǻ	Ǿ	ǿ	Ǻ	Ǽ	Ǿ	ş	ț	ȳ	ȴ	ȶ	ȷ	ȸ
ƒ	Ħ	Į	İ	Ĵ	Ꞁ	ꞁ	Ꞃ	ꞃ	Ꞅ	ꞅ	Ꞇ	ꞇ	ꞈ	꞉	꞊	Ꞌ	ꞌ	Ɥ	ꞎ
Ǻ	ǻ	Ǽ	Ǿ	ǿ	Ǻ	Ǽ	Ǿ	ǿ	Ǻ	Ǽ	Ǿ	ǿ	Ǻ	Ǽ	Ǿ	ǿ	Ǻ	Ǽ	Ǿ
Ŏ	Œ	Ŕ	Ŗ	Ř	Ś	Ŝ	Ş	Š	Ț	Ț	ƒ	Ũ	Ū	Ŭ	Ů	Ű	Ų	Ŵ	Ŷ

Bb Small Capitals From Capitals

Í	&	A	B	C	D	E	F	G	H	I	J	K	L	M	N	O	P	Q	R
S	T	U	V	W	X	Y	Z	À	Á	Â	Ã	Ä	Å	Æ	Ç	È	É	Ê	Ë
Ì	Í	Î	Ï	Ð	Ñ	Ò	Ó	Ô	Õ	Ö	Ø	Ù	Ú	Û	Ü	Ý	Þ	ÿ	Ā
Ǻ	Ą	Ć	Ĉ	Č	Ď	Đ	Ē	Ĕ	È	Ě	Ę	Ė	Ĝ	Ğ	Ġ	Ģ	Ĥ	Ħ	Ĩ
Ī	Ĭ	Į	İ	IJ	Ĵ	Ꞁ	ꞁ	Ꞃ	ꞃ	Ꞅ	ꞅ	Ꞇ	ꞇ	ꞈ	꞉	꞊	Ꞌ	ꞌ	Ɥ
Ŕ	Ŗ	Ś	Ŝ	Ş	Š	Ț	Ț	ƒ	Ũ	Ū	Ŭ	Ů	Ű	Ų	Ŵ	Ŷ	Ž	Ż	Ž
Ŏ	Ű	Ǻ	ǻ	Ǿ	ǿ	Ǻ	Ǽ	Ǿ	ş	ț	ȳ	`	'	^	~	-	˘	˙	˚
°	”	˘	˙	/	Ꞁ	ꞁ	Ꞃ	ꞃ	Ꞅ	ꞅ	Ꞇ	ꞇ	ꞈ	꞉	꞊	Ꞌ	ꞌ	Ɥ	ꞎ
Ą	Ǻ	ǻ	Ǽ	Ǿ	ǿ	Ǻ	Ǽ	Ǿ	ǿ	Ǻ	Ǽ	Ǿ	ǿ	Ǻ	Ǽ	Ǿ	ǿ	Ǻ	Ǽ
Ǻ	ǻ	Ǽ	Ǿ	ǿ	Ǻ	Ǽ	Ǿ	ǿ	Ǻ	Ǽ	Ǿ	ǿ	Ǻ	Ǽ	Ǿ	ǿ	Ǻ	Ǽ	Ǿ
Ŏ	Œ	Ŕ	Ŗ	Ř	Ś	Ŝ	Ş	Š	Ț	Ț	ƒ	Ũ	Ū	Ŭ	Ů	Ű	Ų	Ŵ	Ŷ
Ű	Ų	Ŵ	Ŷ	Ÿ	~														



ظبغ Contextual Alternates

-	:	-	—
---	---	---	---

fi Standard Ligatures

fb	ff	ffb	ffh	ffi	ffj	ffk	ffl	fh	fi	fj	fk	fl
----	----	-----	-----	-----	-----	-----	-----	----	----	----	----	----

st Discretionary Ligatures

IJ	ct	st
----	----	----

619 Oldstyle Figures

0	1	2	3	4	5	6	7	8	9	0	1	2	3	4	5	6	7	8	9
---	---	---	---	---	---	---	---	---	---	---	---	---	---	---	---	---	---	---	---

123 Lining Figures

0	1	2	3	4	5	6	7	8	9	
---	---	---	---	---	---	---	---	---	---	--

123 Tabular Figures

\$,	.	0	1	2	3	4	5	6	7	8	9	:	;	¢	£	¥	f	฿
		¢	₩	₪	₫	€	₹	₺	₱	₳	₪	₪	₪	₪	₪	₪	₪	₪	₪
2	3	4	5	6	7	8	9												

0 Slashed Zero

0	0	0	0
---	---	---	---

7/ Numerators

0	1	2	3	4	5	6	7	8	9
---	---	---	---	---	---	---	---	---	---



$/_8$ Denominators

0	1	2	3	4	5	6	7	8	9
---	---	---	---	---	---	---	---	---	---

$7/8$ Fractions

/	0	1	2	3	4	5	6	7	8	9	0	1	2	3	4	5	6	7	8	
9																				

x^2 Superscript

2	3	1	0	4	5	6	7	8	9	[]
---	---	---	---	---	---	---	---	---	---	---	---

x_2 Subscript

0	1	2	3	4	5	6	7	8	9
---	---	---	---	---	---	---	---	---	---

1^{st} Ordinals

a	o
---	---

$\{G\}$ Case-Sensitive Forms

()	-	:	@	[]	{		}	i	«		·	»	¿	˘	ˆ	`	'
˘	ˆ	ˆ	˘	˘	˘	-	˘	·	˘	˘	˘	˘	˘	˘	˘	˘	˘	˘	˘
/	-	—	•	<	>	◦	ˆ	˘											

$\$§$ Localized Forms

Latin, Azeri

ı

Latin, Catalan

L	l
---	---



Latin, Crimean Tatar

i

Latin, Dutch

IJ	J	j
----	---	---

Latin, Kazakh

i

Latin, Moldavian

Ș	ș	Ț	ț
---	---	---	---

Latin, Romanian

Ș	ș	Ț	ț
---	---	---	---

Latin, Tatar

i

Latin, Turkish

i

Latin, Vietnamese

`	'	^	~	˘
---	---	---	---	---

GG Stylistic Alternates

C	Ç	Ć	Ĉ	Ċ	Č	c	ç	ć	ĉ	ċ	č
---	---	---	---	---	---	---	---	---	---	---	---

[1] Stylistic Set 1 (Alternate C)

C	Ç	Ć	Ĉ	Ċ	Č	c	ç	ć	ĉ	ċ	č
---	---	---	---	---	---	---	---	---	---	---	---

[2] Stylistic Set 2 (Alternate G)

G	Ĝ	Ğ	Ġ	Ģ	G	Ĝ	Ğ	Ġ	Ģ
---	---	---	---	---	---	---	---	---	---



[3] Stylistic Set 3 (Alternate R)

R	Ŕ	Ṛ	Ř	R	Ŕ	Ṛ	Ř
---	---	---	---	---	---	---	---

[5] Stylistic Set 5 (Alternate Registered)

®

[19] Stylistic Set 19 (Swiss Franc)

F

[20] Stylistic Set 20 (Multiply)

×

̄̄ Glyph Composition / Decomposition

l	J	`	´	^	~	-	˘	•	¨	°	°	”	˘	‘	’	-	/	/	^
˘																			

Full Widths

	,	;	?
--	---	---	---

1① Alternate Annotation Forms

I	II	III	IV	V	VI	VII	VIII	IX
---	----	-----	----	---	----	-----	------	----

Ornaments

--



Languages

Information about languages is mainly based on the Unicode Common Locale Data Repository. For details visit the [Unicode CLDR Project](#).

Latin

Afrikaans	Ganda	Malagasy	Shambala
Albanian	German	Maltese	Shona
Asturian	Gusii	Manx	Slovak
Asu	Hungarian	Meru	Slovenian
Basque	Icelandic	Morisyen	Soga
Bemba	Igbo	North Ndebele	Somali
Bena	Inari Sami	Northern Sami	Spanish
Breton	Indonesian	Norwegian Bokmål	Swahili
Catalan	Irish	Norwegian Nynorsk	Swedish
Chiga	Italian	Nyankole	Swiss German
Colognian	Jola-Fonyi	Oromo	Taita
Cornish	Kabuverdianu	Polish	Teso
Croatian	Kalaallisut	Portuguese	Turkish
Czech	Kalenjin	Prussian	Upper Sorbian
Danish	Kamba	Quechua	Uzbek
Dutch	Kikuyu	Romanian	Vietnamese
Embu	Kinyarwanda	Romansh	Volapük
English	Latvian	Rombo	Vunjo
Esperanto	Lithuanian	Rundi	Walser
Estonian	Lower Sorbian	Rwa	Welsh
Faroese	Luo	Samburu	Western Frisian
Filipino	Luxembourgish	Sango	Yoruba
Finnish	Luyia	Sangu	Zulu
French	Machame	Scottish Gaelic	
Friulian	Makhuwa-Meetto	Sena	
Galician	Makonde	Serbian	



Character Set

Adobe

Adobe Latin-1

Apple Macintosh

MacOS Central European Latin
MacOS Croatian
MacOS Iceland
MacOS Roman (Standard Latin)
MacOS Romanian
MacOS Turkish

ISO 8859

8859-1 Latin-1 Western European
8859-2 Latin-2 Central European
8859-3 Latin-3 South European
8859-4 Latin-4 North European
8859-9 Latin-5 Turkish
8859-10 Latin-6 Nordic
8859-13 Latin-7 Baltic Rim
8859-14 Latin-8 Celtic
8859-15 Latin-9
8859-16 Latin-10 South-Eastern European

Microsoft Windows

MS Windows 1250 Central European Latin
MS Windows 1252 Western (Standard Latin)
MS Windows 1254 Turkish Latin
MS Windows 1257 Baltic Latin
MS Windows 1258 Vietnamese



Technical Data

Identification

Table	Description	Value
-	File name	KleischLLVar-[CONT,wght].ttf
-	File size	466200 bytes
-	MD5 checksum	38F6D57C380799D4DEED491C9AA7B958
head	created	Mon Nov 18 14:03:27 2024
head	modified	Thu Dec 19 12:59:34 2024
name	Unique font identifier	Lineto GmbH: Kleisch LL Var-Regular: 2024
name	Version string	Version 5.001; build 0093
CFF	Outline format	TrueType

Names

ID	Description	Value
1	Family name	Kleisch LL Var
2	Subfamily name	Regular
4	Full font name	Kleisch LL Var Regular
6	Postscript name	KleischLLVar-Regular

Classification & Style

Table	Description	Value
OS/2	Width class	5 - Medium (normal)
OS/2	Weight class	400 - Normal (Regular)
post	Italic angle	0.0°
OS/2	fsSelection style bits	Regular
head	macStyle bits	
OS/2	PANOSE familyType	2 - Latin Text
OS/2	PANOSE Weight	5 - Book
OS/2	PANOSE Proportion	4 - Even Width
OS/2	PANOSE X-height	4 - Constant/Large



Legal Information

ID	Description	Value
0	Copyright	@2024, Copyright by Lineto GmbH. All rights reserved.
7	Trademark	“Kleisch” is a trademark of Lineto GmbH
8	Manufacturer	Lineto GmbH
9	Designer	Chiachi Chao (2020–2024)
10	Font Description	LL Kleisch, designed by Chiachi Chao between 2020 and 2024, is a contemporary take on Baroque serif typefaces, influenced by the approaches of Van Dijk, Kis, Fleischman, three influential punchcutters. It is an extensive variable font family with axes for weight and contrast, conceived for easy pairing with the popular Ming typefaces in CJK typesetting. First published by Lineto in 2024. Font engineering and mastering by Alphabet, Berlin.
11	Vendor URL	https://www.lineto.com
12	Designer URL	https://lineto.com/designers
13	License Description	No use of this font is allowed without Lineto’s consent and without the user’s compliance with the Lineto EULA and the SUL. Lawful use of the fonts or the data contained within the font files excludes modifying, reassembling, renaming, storing on publicly available servers, redistributing and selling. Lineto fonts or any of the data contained within them, including but not limited to rasterized glyph outlines, metrical data, kerning and hinting information, to create new fonts or font-based services using artificial neural networks, machine learning algorithms, or any other generative processes is strictly prohibited. This includes any automated processes, deep learning models, or any other AI-based methods to generate or modify fonts based on the data contained in the original Font Software. Any unlawful use of this typographic software will be prosecuted. For additional information see https://lineto.com/licensing .
14	License Info URL	https://lineto.com/licensing



Vertical Metric

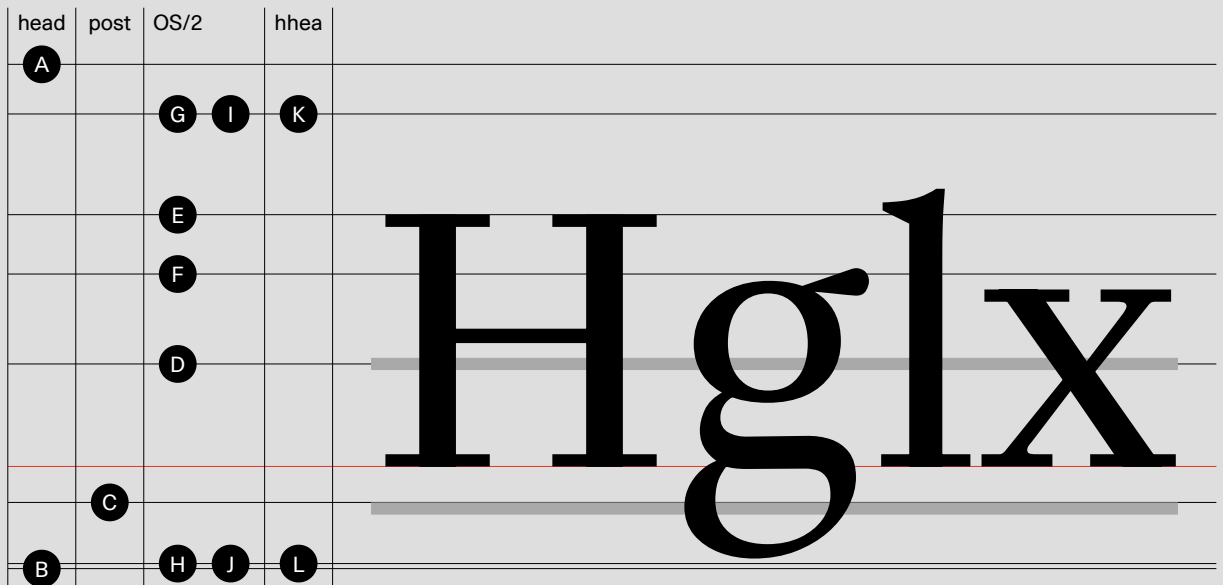


	Table	Description	Value
	head	Units per Em	1000
A	head	y Max	1118
B	head	y Min	-284
C	post	Underline Position	-100
	post	Underline Size	34
D	OS/2	Strikeout Position	285
	OS/2	Strikeout Size	34
E	OS/2	Cap Height	700
F	OS/2	xHeight	535
G	OS/2	Typo Ascender	980
H	OS/2	Typo Descender	-270
	OS/2	Typo Linegap	0
I	OS/2	Win Ascender	980
J	OS/2	Win Descender	270
K	hhea	Ascender	980
L	hhea	Descender	-270
	hhea	Linegap	0