



Brown Mono LL Grk
Regular

Font Format: Opentype PostScript (Opentype CFF)
Designer: Aurèle Sack (2020)

Latin

A large, bold, black uppercase letter 'B' centered on a red background.

Greek

A large, bold, black uppercase letter 'O' centered on a red background.



Glyph Map

All 603 glyphs of Brown Mono LL Grk Regular in physical order.

□				!	"	#	\$	%	&	'	()	*	+	,	-	.	/	0
1	2	3	4	5	6	7	8	9	:	;	<	=	>	?	@	A	B	C	D
E	F	G	H	I	J	K	L	M	N	O	P	Q	R	S	T	U	V	W	X
Y	Z	[\]	^	_	`	a	b	c	d	e	f	g	h	i	j	k	l
m	n	o	p	q	r	s	t	u	v	w	x	y	z	{		}	~		i
ç	£	¤	¥	¦	§	¨	©	ª	«	¬	-	®	-	°	±	²	³	'	µ
¶	·	,	¹	º	»	¼	½	¾	¿	É	Ñ	Ö	×	Ü	ß	à	á	â	ã
ä	å	ç	è	é	ê	ë	ì	í	î	ï	ñ	ò	ó	ô	õ	ö	÷	ù	ú
û	ü	œ	æ	ƒ	ƒ	ˆ	˘	-	˘	·	°	˙	˚	˛	˜	˝	˝	˝	˝
˜	-	˘	·	¨	˚	˛	˜	˝	˝	˝	˝	˝	˝	˝	˝	˝	˝	˝	˝
˝	À	·	É	Ɔ	Ɔ	Ɔ	Ɔ	Ɔ	Ɔ	Ɔ	Ɔ	Ɔ	Ɔ	Ɔ	Ɔ	Ɔ	Ɔ	Ɔ	Ɔ
Λ	M	N	Ξ	O	Π	P	Σ	T	Υ	Φ	X	Ψ	Ω	Ï	ÿ	á	é	ή	ί
Ü	α	β	γ	δ	ε	ζ	η	θ	ι	κ	λ	μ	ν	ξ	ο	π	ρ	ς	σ
τ	υ	φ	χ	ψ	ω	ϊ	ϋ	ό	ύ	ώ									
			-	-	-	-	/	/	/	\	"	"	"	"	†	‡	●	...	∞
'	"	<	>	-	0	4	5	6	7	8	9	0	1	2	3	4	5	6	7
8	9	¢	₣	€	₵	₶	₷	₸	₹	₺	₻	₼	₽	₾	₿	№	©	™	Ω
€	⅓	⅓	⅓	⅓	⅓	⅓	⅓	⅓	⅓	⅓	⅓	⅓	⅓	⅓	⅓	⅓	⅓	⅓	⅓
→	↓	↖	↗	↘	↙	↞	↠	↡	↳	ò	Δ	∏	Σ	-	-	·	√	∞	Λ
∫	≈	≠	≡	≤	≥	:	∅	■	■	□	■	□	▲	▶	▼	◀	◊	○	●
□	■	☺	☺	☺	☺	☺	☺	☺	☺	①	②	③	④	⑤	⑥	⑦	⑧	⑨	⑩
②	③	④	⑤	⑥	⑦	⑧	⑨		i	l	l	˘	0	1	2	3	4	5	6
7	8	9	0	1	2	3	4	5	6	7	8	9	\$	o	1	2	3	4	5
ó	7	8	9	ç	£	¥	f		¢	₣	€	₵	₶	₷	₸	₹	₺	₻	₼
ß	()	-	@	[]	{		}	i	«	-	·	»	¿	`	'	^	~
-	˘	·	¨	˚	˛	˜	˝	˝	˝	˝	˝	˝	˝	˝	˝	˝	˝	˝	˝
˝	∅	∅	∅	∅	∅	∅	∅	∅	∅	∅	a	à	á	â	ã	ä	å	⊥	⊥
¼	½	1	⅓	⅓	⅓	⅓	⅓	⅓	⅓	⅓	⅓	⅓	⅓	⅓	⅓	⅓	⅓	⅓	⅓
2	⅓	⅓	②	②	2	2	2	½	3	3	¾	3	⅓	⅓	⅓	⅓	⅓	③	③



³	₃	3	$\frac{0}{3}$	$\frac{1}{3}$	$\frac{2}{3}$	—	—	—	—	*	*	*	•	•	←	→	←	→	fi
fl	⊞	↑																	



All encoded characters should be accessible with every unicode capable application. For details about Unicode Blocks visit the [Unicode Website](#).

Encoded Characters

Basic Latin

Block from 0000 to 007F

0000	000D	0020	0021	0022	0023	0024	0025	0026	0027	0028	0029	002A	002B	002C	002D	002E	002F	0030	0031
			!	"	#	\$	%	&	'	()	*	+	,	-	.	/	0	1
0032	0033	0034	0035	0036	0037	0038	0039	003A	003B	003C	003D	003E	003F	0040	0041	0042	0043	0044	0045
2	3	4	5	6	7	8	9	:	;	<	=	>	?	@	A	B	C	D	E
0046	0047	0048	0049	004A	004B	004C	004D	004E	004F	0050	0051	0052	0053	0054	0055	0056	0057	0058	0059
F	G	H	I	J	K	L	M	N	O	P	Q	R	S	T	U	V	W	X	Y
005A	005B	005C	005D	005E	005F	0060	0061	0062	0063	0064	0065	0066	0067	0068	0069	006A	006B	006C	006D
Z	[\]	^	_	`	a	b	c	d	e	f	g	h	i	j	k	l	m
006E	006F	0070	0071	0072	0073	0074	0075	0076	0077	0078	0079	007A	007B	007C	007D	007E			
n	o	p	q	r	s	t	u	v	w	x	y	z	{		}	~			

Latin-1 Supplement

Block from 0080 to 00FF

00A0	00A1	00A2	00A3	00A4	00A5	00A6	00A7	00A8	00A9	00AB	00AC	00AD	00AE	00AF	00B0	00B1	00B2	00B3	00B4
	ı	ç	£	¤	¥	¦	§	¨	©	«	¬	-	®	-	°	±	²	³	´
00B5	00B6	00B7	00B8	00B9	00BB	00BC	00BD	00BE	00BF	00C9	00D1	00D6	00D7	00DC	00DF	00E0	00E1	00E2	00E3
μ	¶	·	,	¹	»	¼	½	¾	¿	É	Ñ	Ö	×	Ü	ß	à	á	â	ã
00E4	00E5	00E7	00E8	00E9	00EA	00EB	00EC	00ED	00EE	00EF	00F1	00F2	00F3	00F4	00F5	00F6	00F7	00F9	00FA
ä	å	ç	è	é	ê	ë	ì	í	î	ï	ñ	ò	ó	ô	õ	ö	÷	ù	ú
00FB	00FC																		
û	ü																		

Latin Extended-A

Block from 0100 to 017F

0152	0153
Œ	œ

Latin Extended-B

Block from 0180 to 024F

0192
f



Spacing Modifier Letters

Block from 02B0 to 02FF

02BB	02BC	02C6	02C7	02C9	02D8	02D9	02DA	02DB	02DC	02DD
/	/	^	v	-	v	.	o		~	"

Combining Diacritical Marks

Block from 0300 to 036F

0300	0301	0302	0303	0304	0306	0307	0308	030A	030B	030C	0312	0313	0323	0326	0327	0328	032E	0331	0335
\	'	^	~	-	v	.	..	o	"	v	'	'	.	,	'	ç	v	-	-

Greek and Coptic

Block from 0370 to 03FF

037A	037E	0384	0385	0386	0387	0388	0389	038A	038C	038E	038F	0390	0391	0392	0393	0394	0395	0396	0397
.	;	'	ˆ	Α	.	Ε	Η	Ι	Ο	Υ	Ω	Ϛ	Α	Β	Γ	Δ	Ε	Ζ	Η
0398	0399	039A	039B	039C	039D	039E	039F	03A0	03A1	03A3	03A4	03A5	03A6	03A7	03A8	03A9	03AA	03AB	03AC
Θ	Ι	Κ	Λ	Μ	Ν	Ξ	Ο	Π	Ρ	Σ	Τ	Υ	Φ	Χ	Ψ	Ω	Ϙ	ϙ	α
03AD	03AE	03AF	03B0	03B1	03B2	03B3	03B4	03B5	03B6	03B7	03B8	03B9	03BA	03BB	03BC	03BD	03BE	03BF	03C0
έ	ή	ί	Ϛ	α	β	γ	δ	ε	ζ	η	θ	ι	κ	λ	μ	ν	ξ	ο	π
03C1	03C2	03C3	03C4	03C5	03C6	03C7	03C8	03C9	03CA	03CB	03CC	03CD	03CE						
ρ	ς	σ	τ	υ	φ	χ	ψ	ω	Ϛ	ϛ	ο	ύ	ώ						

General Punctuation

Block from 2000 to 206F

2000	2001	2002	2003	2004	2005	2006	2007	2008	2009	200A	200B	2012	2013	2014	2015	2018	2019	201A	201B
												—	—	—	—	'	'	,	\
201C	201D	201E	201F	2020	2021	2022	2026	2030	2032	2033	2039	203A	2044						
"	"	"	"	†	‡	•	…	⁄	'	"	<	>	—						

Superscripts and Subscripts

Block from 2070 to 209F

2070	2074	2075	2076	2077	2078	2079	2080	2081	2082	2083	2084	2085	2086	2087	2088	2089
⁰	⁴	⁵	⁶	⁷	⁸	⁹	⁰	¹	²	³	⁴	⁵	⁶	⁷	⁸	⁹

Currency Symbols

Block from 20A0 to 20CF

20A1	20A6	20AC	20AF	20B2	20B4	20B5	20B8	20B9	20BA	20BC	20BD	20BF
₱	₯	€	₪	₺	₹	₺	₹	₺	₹	₺	₹	₺



Letterlike Symbols

Block from 2100 to 214F

2113	2116	2117	2122	2126	212E
ℓ	№	⊕	ℑ	Ω	e

Number Forms

Block from 2150 to 218F

2150	2151	2152	2153	2154	2155	2156	2157	2158	2159	215A	215B	215C	215D	215E	215F	2189
$\frac{1}{7}$	$\frac{1}{9}$	$\frac{1}{10}$	$\frac{1}{3}$	$\frac{2}{3}$	$\frac{1}{5}$	$\frac{2}{5}$	$\frac{3}{5}$	$\frac{4}{5}$	$\frac{1}{6}$	$\frac{5}{6}$	$\frac{1}{8}$	$\frac{3}{8}$	$\frac{5}{8}$	$\frac{7}{8}$	$\frac{1}{}$	$\frac{0}{3}$

Arrows

Block from 2190 to 21FF

2190	2191	2192	2193	2196	2197	2198	2199	21B0	21B1	21B2	21B3
←	↑	→	↓	↖	↗	↘	↙	↵	↶	↷	↸

Mathematical Operators

Block from 2200 to 22FF

2202	2206	220F	2211	2212	2215	2219	221A	221E	2227	222B	2248	2260	2261	2264	2265	22EE
∂	Δ	∏	∑	-	-	·	√	∞	∧	∫	≈	≠	≡	≤	≥	⋮

Miscellaneous Technical

Block from 2300 to 23FF

2300
∅

Block Elements

Block from 2580 to 259F

2591
▒

Geometric Shapes

Block from 25A0 to 25FF

25A0	25A1	25AE	25AF	25B2	25BA	25BC	25C4	25CA	25CB	25CF	25FB	25FC
■	□	■	□	▲	▶	▼	◀	◊	○	●	□	■



Miscellaneous Symbols

Block from 2600 to 26FF

262E	263A	263B
☺	☺	☹

Dingbats

Block from 2700 to 27BF

270E	2713	273A	274F	2764	2780	2781	2782	2783	2784	2785	2786	2787	2788	278A	278B	278C	278D	278E	278F
✎	✓	☀	◻	♥	①	②	③	④	⑤	⑥	⑦	⑧	⑨	①	②	③	④	⑤	⑥
2790	2791	2792																	
⑦	⑧	⑨																	

Arabic Presentation Forms-B

Block from FE70 to FEFF

FEFF



Unencoded Glyphs

All unencoded glyphs are accessible with OpenType layout feature capable applications.

Access All Alternates

-
˘

Case-Sensitive Forms

-	-	-	-	-	-	-	-	-	-	-	-	-	-	-	-	-	-	-	-
()	-	@	[]	{		}	i	«	-	·	»	¿	-	-	●	<	>
-	-	-																	
←	→	˘																	

Case-Sensitive Forms, Glyph Composition / Decomposition

-	-	-	-	-	-	-	-	-	-	-	-	-	-	-	-	-	-	-	-
\	'	^	~	-	˘	·	¨	°	”	˘	·	,	'	€	˘	-			

Discretionary Ligatures

-	-
fi	fl

Denominators

-	-	-	-	-	-	-	-	-	-
0	1	2	3	4	5	6	7	8	9

Historical Forms, Stylistic Set 2

-
ſ

Localized Forms

-	-	-
i	ḷ	l̇



Numerators

-	-	-	-	-	-	-	-	-	-
0	1	2	3	4	5	6	7	8	9

Oldstyle Figures, Proportional Figures

-	-	-	-	-	-	-	-	-	-	-	-	-	-	-	-	-	-	-	-
₪	o	1	2	3	4	5	6	7	8	9	ç	£	¥	f		¢	₤	€	₠
-	-	-	-	-	-	-	-	-	-	-	-	-	-	-	-	-	-	-	-
€	ç	₤	₹	₺	₱	₲	₳												

Ordinals

-	-
ª	º

Ornaments

-	-
♠	†

Stylistic Alternates, Stylistic Set 1

-	-	-	-	-	-	-
a	à	á	â	ã	ä	å

Stylistic Set 3

-	-	-	-	-	-	-	-	-	-	-	-	-	-	-	-	-	-	-	-
Ⓙ	ℓ	$\frac{1}{4}$	$\frac{1}{2}$	Ⓙ	$\frac{1}{7}$	$\frac{1}{9}$	$\frac{1}{10}$	$\frac{1}{3}$	$\frac{1}{5}$	$\frac{1}{6}$	$\frac{1}{8}$	Ⓙ	⓪	Ⓛ	ℓ	Ⓙ	Ⓙ	$\frac{1}{10}$	

Stylistic Set 4

-	-	-	-	-	-	-	-	-	-	-	-
2	²	$\frac{1}{2}$	²	$\frac{2}{3}$	$\frac{2}{5}$	Ⓜ	Ⓜ	²	²	²	$\frac{1}{2}$

Stylistic Set 5

-	-	-	-	-	-	-	-	-	-	-	-	-	-	-	-	-	-	-	-
3	³	$\frac{3}{4}$	³	$\frac{1}{3}$	$\frac{2}{3}$	$\frac{3}{5}$	$\frac{3}{8}$	$\frac{0}{3}$	Ⓜ	Ⓜ	³	³	³	$\frac{0}{3}$	$\frac{1}{3}$	$\frac{2}{3}$			



Stylistic Set 6

-	-	-	-
—	—	—	—

Stylistic Set 7

-
*

Stylistic Set 8

-
*

Stylistic Set 9

-
*

Stylistic Set 10

-	-
•	•

Stylistic Set 11

-	-	-	-
←	→	←	→

Slashed Zero

-	-	-	-	-	-	-	-	-	-
$\frac{0}{0}$	0	$\frac{0}{00}$	0	0	$\frac{1}{10}$	$\frac{0}{3}$	0	0	0

Other

-
□



OpenType Layout Features

For details about OpenType Layout Features see the [OpenType Layout tag registry](#).

Substitution Features

	<p>Access All Alternates This feature makes all variations of a selected character accessible.</p>		<p>Discretionary Ligatures Replaces a sequence of glyphs with a single glyph which is preferred for typographic purposes. This feature covers those ligatures which may be used for special effect, at the user's preference.</p>
	<p>Oldstyle Figures This feature changes selected figures from the default lining style to oldstyle form.</p>		<p>Proportional Figures Replaces figure glyphs set on uniform (tabular) widths with corresponding glyphs set on glyph-specific (proportional) widths.</p>
	<p>Slashed Zero Some fonts contain both a default form of zero, and an alternative form which uses a diagonal slash through the counter. This feature allows the user to change from the default 0 to a slashed form.</p>		<p>Numerators Replaces selected figures which precede a slash with numerator figures, and replaces the typographic slash with the fraction slash.</p>
	<p>Denominators Replaces selected figures which follow a slash with denominator figures.</p>		<p>Fractions Replaces figures separated by a slash with 'common' (diagonal) fractions.</p>
	<p>Superscript Replaces lining or oldstyle figures with superior figures (primarily for footnote indication), and may replace lowercase letters with superior letters (primarily for abbreviated French titles).</p>		<p>Subscript The "subs" feature may replace a default glyph with a subscript glyph.</p>
	<p>Scientific Inferiors Replaces lining or oldstyle figures with inferior figures (smaller glyphs which sit lower than the standard baseline, primarily for chemical or mathematical notation). May also replace lowercase characters with alphabetic inferiors.</p>		<p>Ordinals Replaces default alphabetic glyphs with the corresponding ordinal forms for use after figures.</p>
	<p>Historical Forms Some letterforms were in common use in the past, but appear anachronistic today. The best-known example is the long form of s; others would include the old Fraktur k. Some fonts include the historical forms as alternates, so they can be used for a 'period' effect.</p>		<p>Case-Sensitive Forms Shifts various punctuation marks up to a position that works better with all-capital sequences or sets of lining figures; also changes oldstyle figures to lining figures.</p>
	<p>Localized Forms This feature enables localized forms of glyphs to be substituted for default forms.</p>		<p>Stylistic Alternates Many fonts contain alternate glyph designs for a purely esthetic effect; these don't always fit into a clear category like swash or historical. This feature replaces the default forms with the stylistic alternates.</p>



[1]

Stylistic Set 1
Glyphs in stylistic sets may be designed to harmonise visually, interact in particular ways, or otherwise work together.

[2]

Stylistic Set 2

[3]

Stylistic Set 3

[4]

Stylistic Set 4

[5]

Stylistic Set 5

[6]

Stylistic Set 6

[7]

Stylistic Set 7

[8]

Stylistic Set 8

[9]

Stylistic Set 9

[10]

Stylistic Set 10

[11]

Stylistic Set 11

Glyph Composition / Decomposition
To minimize the number of glyph alternates, it is sometimes desired to decompose a character into two glyphs. Additionally, it may be preferable to compose two characters into a single glyph for better glyph processing. This feature permits such composition/decomposition.

Mathematical Greek
Replaces standard typographic forms of Greek glyphs with corresponding forms commonly used in mathematical notation (which are a subset of the Greek alphabet).

Alternate Annotation Forms
Replaces default glyphs with various notational forms (e.g. glyphs placed in open or solid circles, squares, parentheses, diamonds or rounded boxes).

Ornaments
This feature gives the user access to ornament glyphs (e.g. fleurons, dingbats and border elements) in the font.



Languages

Information about languages is mainly based on the Unicode Common Locale Data Repository. For details visit the [Unicode CLDR Project](#).

Latin

Asu
Bemba
Bena
Chiga
Cornish
English
Filipino
Gusii
Indonesian
Kabuverdianu

Kalenjin
Kinyarwanda
Luo
Luyia
Machame
Makhuwa-Meetto
Makonde
Morisyen
North Ndebele

Nyankole
Oromo
Quechua
Rombo
Rundi
Rwa
Samburu
Sangu
Shambala

Shona
Soga
Somali
Swahili
Taita
Teso
Uzbek
Vunjo
Zulu

Greek

Greek



Character Set

Adobe

Adobe Greek-1

ISO 8859

8859-7 Latin/Greek

Microsoft Windows

MS Windows 1253 Greek



Technical Data

Identification

Table	Description	Value
-	File name	BrownMonoLLGrk-Regular.otf
-	File size	49512 bytes
-	MD5 checksum	04938B4EB5EB6EC46335EA598AA8B6C0
head	created	Thu May 28 10:10:38 2020
head	modified	Thu Sep 9 12:59:14 2021
name	Unique font identifier	Lineto: Brown Mono LL Grk-Regular: 2020
name	Version string	Version 5.000; build 0018
CFF	Outline format	PostScript

Names

ID	Description	Value
1	Family name	Brown Mono LL Grk
2	Subfamily name	Regular
4	Full font name	Brown Mono LL Grk
6	Postscript name	BrownMonoLLGrk-Regular

Classification & Style

Table	Description	Value
OS/2	Width class	5 - Medium (normal)
OS/2	Weight class	400 - Normal (Regular)
post	Italic angle	0.0°
OS/2	fsSelection style bits	Regular
head	macStyle bits	
OS/2	PANOSE Family Kind	2 - Latin Text
OS/2	PANOSE Serif Style	2 - Normal Sans
OS/2	PANOSE Weight	5 - Book
OS/2	PANOSE Proportion	4 - Even Width
OS/2	PANOSE x-height	4 - Constant/Large



Legal Information

ID	Description	Value
0	Copyright	© 2020, Copyright by Lineto GmbH. All rights reserved.
7	Trademark	Brown is a trademark of Lineto
8	Manufacturer	Lineto
9	Designer	Aurèle Sack (2020)
10	Font Description	LL Brown Mono is designed by Aurèle Sack. It's an extension to the LL Brown family, first released by Lineto in 2011. Font engineering and mastering by Alphabet Type GmbH.
11	Vendor URL	https://www.lineto.com
12	Designer URL	https://www.lineto.com/The+Designers
13	License Description	No use of this font is allowed without Lineto's consent and without the user's compliance with the Lineto EULA and the SUL. Lawful use of the fonts or the data contained within the font files excludes modifying, reassembling, renaming, storing on publicly available servers, redistributing and selling. Any unlawful use of this typographic software will be prosecuted. For additional information see https://lineto.com/licensing
14	License Info URL	https://lineto.com/licensing



Vertical Metric

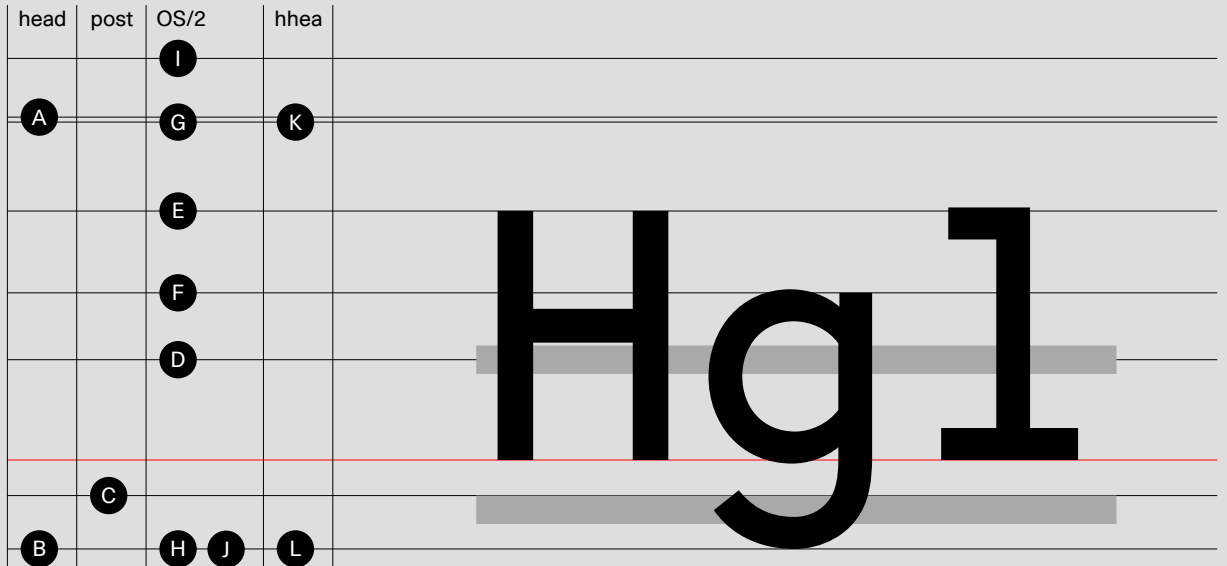


	Table	Description	Value
	head	Units perEM	1000
A	head	y Max	964
B	head	y Min	-250
C	post	Underline Position	-100
	post	Underline Size	80
D	OS/2	Strikeout Position	282
	OS/2	Strikeout Size	80
E	OS/2	Caps Height	700
F	OS/2	x Height	470
G	OS/2	Typo Ascender	950
H	OS/2	Typo Descender	-250
	OS/2	Typo Linegap	0
I	OS/2	Win Ascender	1129
J	OS/2	Win Descender	251
K	hhea	Ascender	950
L	hhea	Descender	-250
	hhea	Linegap	0