



Replica LL
Regular

Font Format: OpenType PostScript (OpenType CFF)
Designer: NORM

A large, bold, black uppercase letter 'R' is centered on a solid red rectangular background. The letter has a classic, slightly stylized serif font appearance with a thick vertical stem and a curved top that tapers into a diagonal leg.



Glyph Map

All 846 glyphs of Replica LL Regular in physical order.

□				!	"	#	\$	%	&	'	()	*	+	,	-	.	/	0
1	2	3	4	5	6	7	8	9	:	;	<	=	>	?	@	A	B	C	D
E	F	G	H	I	J	K	L	M	N	O	P	Q	R	S	T	U	V	W	X
Y	Z	[\]	^	_	`	a	b	c	d	e	f	g	h	i	j	k	l
m	n	o	p	q	r	s	t	u	v	w	x	y	z	{		}	~		ı
€	£	¤	¥	¦	§	¨	©	ª	«	¬	-	®	-	°	±	²	³	´	µ
¶	·	¸	¹	º	»	¼	½	¾	¿	À	Á	Â	Ã	Ä	Å	Æ	Ç	È	É
Ê	Ë	Ì	Í	Î	Ï	Ð	Ñ	Ò	Ó	Ô	Õ	Ö	×	Ø	Ù	Ú	Û	Ü	Ý
Þ	ß	à	á	â	ã	ä	å	æ	ç	è	é	ê	ë	ì	í	î	ï	ð	ñ
ò	ó	ô	õ	ö	÷	ø	ù	ú	û	ü	ý	þ	ÿ	Ā	ā	Ă	ă	Ą	ą
Ć	ć	Ĉ	ĉ	Č	č	Ď	ď	Đ	đ	Ē	ē	Ĕ	ĕ	Ė	ė	Ę	ę		
Ě	ě	Ĝ	ĝ	Ğ	ğ	Ġ	ġ	Ĥ	ĥ	Ħ	ħ	Ĩ	ĩ	Ī	ī	Ĵ	ĵ		
Ķ	ķ	Ŀ	ł	Ł	ł	Ń	ń	Ņ	ņ	Ō	ō	Ŏ	ö	Œ	œ	Ŕ	ŕ		
Ŗ	ŗ	Ř	ř	Ś	ś	Ŝ	ŝ	Ş	ş	Š	š	Ţ	ţ	Ŧ	ț	Ũ	ũ		
Ū	ū	Ů	ů	Ű	ű	Ų	ų	Ŵ	ŵ	Ŷ	ŷ	Ÿ	Ž	ž	Ż	ż	Ž	ž	Ž
ž	ƒ	θ	ε	ƒ	γ	†	Ń	z	Ă	ă	Ĭ	ĭ	Ö	ö	Ů	ů	Ğ	ğ	
Ķ	ķ	Q	q	Ñ	ñ	Á	á	Æ	æ	Ø	ø	Ş	ş	Ţ	ţ	Ĥ	ĥ	Ó	ó
Ȳ	ȳ	J	Ϡ	Ϡ	ε	γ	ι	η	Ϡ	ˆ	˘	-	˘	·	°	˘	˘	˘	˘
˘	˘	˘	-	˘	˘	˘	˘	˘	˘	˘	˘	˘	˘	˘	˘	˘	˘	˘	˘
Ω	μ	π	Β	β	Δ	δ	Δ	δ	Δ	δ	Δ	δ	Δ	δ	Δ	δ	Δ	δ	Δ
ħ	Ĥ	ħ	Ł	ł	Ļ	ļ	Ľ	ĺ	Ł	ł	Ł	ł	Ł	ł	Ł	ł	Ł	ł	Ł
ŋ	Ŕ	ŕ	Ŗ	ŗ	Ř	ř	Ŕ	ŗ	Ś	ś	Ŝ	ŝ	Ţ	ţ	Ŧ	ț	Ũ	ũ	Ŵ
ŵ	Ŷ	ŷ	Ÿ	Ź	ż	Ż	ż	Ź	ż	Ź	ż	Ź	ż	Ź	ż	Ź	ż	Ź	ż
ı	Œ	œ	Ŧ	ț	Ũ	ũ	Ŵ	ŵ	Ŷ	ŷ	Ÿ	Ź	ż	Ż	ż	Ź	ż	Ź	ż
	-	-	—	—	‘	’	,	‘	“	”	„	“	†	‡	•	…	‰	’	”
<	>	/	o	4	5	6	7	8	9	0	1	2	3	4	5	6	7	8	9
¢	₣	€	₠	₡	₢	₣	₤	₥	₦	₧	₨	₩	₪	₫	€	₭	₮	₯	₰
¼	½	⅔	⅜	⅝	⅞	⅞	⅞	⅞	⅞	⅞	⅞	⅞	⅞	⅞	⅞	⅞	⅞	⅞	⅞



L	C	D	M	i	ii	iii	iv	v	vi	vii	viii	ix	x	xi	xii	l	c	d	m
⅓	←	↑	→	↓	↔	↕	↖	↗	↘	↙	∂	Δ	∏	∑	-	/	·	√	∞
∫	≈	≠	≡	≤	≥	□	▲	▶	▼	◀	◇	ff	fi	fl	ffi	ffl		i	Ł
†	0	1	2	3	4	5	6	7	8	9	0	1	2	3	4	5	6	7	8
9		0	1	2	3	4	5	6	7	8	9		#	\$	+	0	1	2	3
4	5	6	7	8	9	<	=	>	~	¢	£	¤	¥	§	-	±	×	÷	f
	€	-	o	1	2	3	4	5	6	7	8	9		()	-	@	[]
_	{	}	i	«	-	·	»	¿	`	'	^	~	-	˘	·	¨	°	“	”
.	,	ˆ	ˆ	˘	-	-	—	•	<	>	0	"	#	'	()	/	[\
]	_	{		}	«	¬	◦	»	-	—	'	'	,	“	”	„	<	>	←
↑	→	↓	↔	↕	↖	↗	↘	↙	α	à	á	â	ã	ä	å	ā	ă	q	ă
á	q	()	[]	{		}	()	[]	{		}	/	\	/	\
—	—	&	1	ß	ff	ffi	ffl	fi	fl	□	■	□	■	□	■	□	□	□	⊠
⊠	⊠	■	■	■	■														



All encoded characters should be accessible with every unicode capable application. For details about Unicode Blocks visit the [Unicode Website](#).

Encoded Characters

Basic Latin

Block from 0000 to 007F

0000	000D	0020	0021	0022	0023	0024	0025	0026	0027	0028	0029	002A	002B	002C	002D	002E	002F	0030	0031
			!	"	#	\$	%	&	'	()	*	+	,	-	.	/	0	1
0032	0033	0034	0035	0036	0037	0038	0039	003A	003B	003C	003D	003E	003F	0040	0041	0042	0043	0044	0045
2	3	4	5	6	7	8	9	:	;	<	=	>	?	@	A	B	C	D	E
0046	0047	0048	0049	004A	004B	004C	004D	004E	004F	0050	0051	0052	0053	0054	0055	0056	0057	0058	0059
F	G	H	I	J	K	L	M	N	O	P	Q	R	S	T	U	V	W	X	Y
005A	005B	005C	005D	005E	005F	0060	0061	0062	0063	0064	0065	0066	0067	0068	0069	006A	006B	006C	006D
Z	[\]	^	_	`	a	b	c	d	e	f	g	h	i	j	k	l	m
006E	006F	0070	0071	0072	0073	0074	0075	0076	0077	0078	0079	007A	007B	007C	007D	007E			
n	o	p	q	r	s	t	u	v	w	x	y	z	{		}	~			

Latin-1 Supplement

Block from 0080 to 00FF

00A0	00A1	00A2	00A3	00A4	00A5	00A6	00A7	00A8	00A9	00AA	00AB	00AC	00AD	00AE	00AF	00B0	00B1	00B2	00B3
	ı	¢	£	¤	¥	ı	§	¨	©	ª	«	¬	-	®	¯	°	±	²	³
00B4	00B5	00B6	00B7	00B8	00B9	00BA	00BB	00BC	00BD	00BE	00BF	00C0	00C1	00C2	00C3	00C4	00C5	00C6	00C7
´	µ	¶	·	¸	¹	º	»	¼	½	¾	¿	À	Á	Â	Ã	Ä	Å	Æ	Ç
00C8	00C9	00CA	00CB	00CC	00CD	00CE	00CF	00D0	00D1	00D2	00D3	00D4	00D5	00D6	00D7	00D8	00D9	00DA	00DB
È	É	Ê	Ë	Ì	Í	Î	Ï	Ð	Ñ	Ò	Ó	Ô	Õ	Ö	×	Ø	Ù	Ú	Û
00DC	00DD	00DE	00DF	00E0	00E1	00E2	00E3	00E4	00E5	00E6	00E7	00E8	00E9	00EA	00EB	00EC	00ED	00EE	00EF
Ü	Ý	Þ	ß	à	á	â	ã	ä	å	æ	ç	è	é	ê	ë	ì	í	î	ï
00F0	00F1	00F2	00F3	00F4	00F5	00F6	00F7	00F8	00F9	00FA	00FB	00FC	00FD	00FE	00FF				
ð	ñ	ò	ó	ô	õ	ö	÷	ø	ù	ú	û	ü	ý	þ	ÿ				

Latin Extended-A

Block from 0100 to 017F

0100	0101	0102	0103	0104	0105	0106	0107	0108	0109	010A	010B	010C	010D	010E	010F	0110	0111	0112	0113			
Ā	ā	Ă	ă	Ą	ą	Ć	ć	Ĉ	ĉ	Č	č	Ď	ď	Đ	đ	Ē	ē					
0114	0115	0116	0117	0118	0119	011A	011B	011C	011D	011E	011F	0120	0121	0122	0123	0124	0125	0126	0127			
Ě	ě	Ĕ	ĕ	Ę	ę	Ě	ě	Ĝ	ĝ	Ğ	ğ	Ġ	ġ	Ĥ	ĥ	Ħ	ħ					
0128	0129	012A	012B	012C	012D	012E	012F	0130	0131	0132	0133	0134	0135	0136	0137	0138	0139	013A	013B			
Ĩ	ĩ	Ī	ī	Ĭ	ĭ	Į	į	İ	ı	Ĵ	ĵ	Ķ	ķ	ĸ	Ĺ	ĺ	Ł					
013C	013D	013E	013F	0140	0141	0142	0143	0144	0145	0146	0147	0148	0149	014A	014B	014C	014D	014E	014F			
Ĳ	ĳ	Ĵ	ĵ	Ķ	ķ	ĸ	Ĺ	ĺ	Ł	ł	Ń	ń	Ņ	ņ	Ň	ň	Ŋ	ŋ	Ō	ō	Ŏ	ö



0150	0151	0152	0153	0154	0155	0156	0157	0158	0159	015A	015B	015C	015D	015E	015F	0160	0161	0162	0163
Ó	ó	Œ	œ	Ř	ř	Ŕ	ŕ	Ř	ř	Ś	ś	Ŝ	ŝ	Ş	ş	Š	š	Ț	ț
0164	0165	0166	0167	0168	0169	016A	016B	016C	016D	016E	016F	0170	0171	0172	0173	0174	0175	0176	0177
Ť	ť	Ʀ	ƣ	Ũ	ũ	Ū	ū	Ů	ů	Ú	ú	Ŭ	ŭ	Ŵ	ŵ	Ŷ	ŷ		
0178	0179	017A	017B	017C	017D	017E	017F												
ÿ	Ž	ž	Ẑ	ẑ	Ẓ	ẓ	ƒ												

Latin Extended-B

Block from 0180 to 024F

018F	0190	0192	0194	0197	019D	01B5	01B6	01CD	01CE	01CF	01D0	01D1	01D2	01D3	01D4	01E6	01E7	01E8	01E9
Ə	Ɛ	ƒ	ɣ	ƚ	Ɲ	Ʒ	Ʒ	Ǻ	ǻ	Ǽ	ǽ	Ǿ	ǿ	ǘ	Ǚ	Ǡ	ǡ	Ǣ	ǣ
01EA	01EB	01F8	01F9	01FA	01FB	01FC	01FD	01FE	01FF	0218	0219	021A	021B	021E	021F	022E	022F	0232	0233
Ɔ	ɔ	Ɔ	ɔ	Ǻ	ǻ	Ǽ	ǽ	Ǿ	ǿ	Ş	ş	Ț	ț	Ǻ	ǻ	Ǿ	ǿ	Ț	ț
0237	0244																		
Ɔ	ɔ																		

IPA Extensions

Block from 0250 to 02AF

0259	025B	0263	0268	0272	0289
ə	ɛ	ɣ	ɨ	ɹ	ɥ

Spacing Modifier Letters

Block from 02B0 to 02FF

02C6	02C7	02C9	02D8	02D9	02DA	02DB	02DC	02DD
ˆ	˘	ˉ	˙	˚	◌	◌	˜	¨

Combining Diacritical Marks

Block from 0300 to 036F

0300	0301	0302	0303	0304	0306	0307	0308	030A	030B	030C	0312	0313	0323	0326	0327	0328	032E	0331
˘	˙	ˆ	˜	ˉ	˘	˙	˚	◌	◌	˘	˙	˚	◌	◌	◌	◌	◌	◌

Greek and Coptic

Block from 0370 to 03FF

0387	0394	03A9	03BC	03C0
◌	Δ	Ω	μ	π



Latin Extended Additional

Block from 1E00 to 1EFF

1E02	1E03	1E0A	1E0B	1E0C	1E0D	1E0E	1E0F	1E10	1E11	1E1E	1E1F	1E20	1E21	1E22	1E23	1E24	1E25	1E2A	1E2B
Ā	ā	Ď	ď	Ď	ď	Ď	ď	Ď	ď	Ě	ě	Ĝ	ĝ	Ĥ	ĥ	Ħ	ħ	Ĭ	ĭ
1E36	1E37	1E38	1E39	1E3A	1E3B	1E3E	1E3F	1E40	1E41	1E42	1E43	1E44	1E45	1E46	1E47	1E48	1E49	1E56	1E57
Ł	ł	Ļ	ļ	Ł	ł	Ń	ń	Ń	ń	Ŧ	ŧ	Ŋ	ŋ	Ņ	ņ	Ň	ň	Š	š
1E5A	1E5B	1E5C	1E5D	1E5E	1E5F	1E60	1E61	1E62	1E63	1E6A	1E6B	1E6C	1E6D	1E6E	1E6F	1E7D	1E80	1E81	
Ŕ	ŕ	Ř	ř	Ŗ	ŗ	Ś	ś	Ş	ş	Ţ	ţ	Ț	ț	Ț	ț	Ț	ț	Ẁ	ẁ
1E82	1E83	1E84	1E85	1E8A	1E8B	1E92	1E93	1E97	1E9E	1EA0	1EA1	1EB8	1EB9	1EBC	1EBD	1ECA	1ECB	1ECC	1ECD
Ẃ	ẃ	Ẅ	ẅ	Ẋ	ẋ	Ẑ	ẑ	Ẓ	ẓ	Ȧ	ȧ	Ǝ	ɛ	Ǝ	ɛ	!	!	Ŏ	ŏ
1EE4	1EE5	1EF2	1EF3	1EF8	1EF9														
Ȫ	ȫ	Ȭ	ȭ	Ȯ	ȯ														

General Punctuation

Block from 2000 to 206F

2000	2001	2002	2003	2004	2005	2006	2007	2008	2009	200A	200B	2012	2013	2014	2015	2018	2019	201A	201B
												–	—	—	—	‘	’	,	’
201C	201D	201E	201F	2020	2021	2022	2026	2030	2032	2033	2039	203A	2044						
“	”	„	”	†	‡	•	…	‰	’	”	<	>	/						

Superscripts and Subscripts

Block from 2070 to 209F

2070	2074	2075	2076	2077	2078	2079	2080	2081	2082	2083	2084	2085	2086	2087	2088	2089
0	4	5	6	7	8	9	0	1	2	3	4	5	6	7	8	9

Currency Symbols

Block from 20A0 to 20CF

20A1	20A6	20AC	20B2	20B5	20BA	20BF
₱	₲	€	₱	₱	₱	₱

Letterlike Symbols

Block from 2100 to 214F

2113	2117	2122	2126	212E
ℓ	®	™	Ω	e



Number Forms

Block from 2150 to 218F

2150	2151	2152	2153	2154	2155	2156	2157	2158	2159	215A	215B	215C	215D	215E	215F	2160	2161	2162	2163
$\frac{1}{7}$	$\frac{1}{9}$	$\frac{1}{10}$	$\frac{1}{3}$	$\frac{2}{3}$	$\frac{1}{5}$	$\frac{2}{5}$	$\frac{3}{5}$	$\frac{4}{5}$	$\frac{1}{6}$	$\frac{5}{6}$	$\frac{1}{8}$	$\frac{3}{8}$	$\frac{5}{8}$	$\frac{7}{8}$	$\frac{1}{4}$	I	II	III	IV
2164	2165	2166	2167	2168	2169	216A	216B	216C	216D	216E	216F	2170	2171	2172	2173	2174	2175	2176	2177
V	VI	VII	VIII	IX	X	XI	XII	L	C	D	M	i	ii	iii	iv	v	vi	vii	viii
2178	2179	217A	217B	217C	217D	217E	217F	2189											
ix	x	xi	xii	l	c	d	m	$\frac{1}{3}$											

Arrows

Block from 2190 to 21FF

2190	2191	2192	2193	2194	2195	2196	2197	2198	2199
←	↑	→	↓	↔	↕	↖	↗	↘	↙

Mathematical Operators

Block from 2200 to 22FF

2202	2206	220F	2211	2212	2215	2219	221A	221E	222B	2248	2260	2261	2264	2265
∂	Δ	∏	∑	-	/	·	√	∞	∫	≈	≠	≡	≤	≥

Geometric Shapes

Block from 25A0 to 25FF

25AF	25B2	25BA	25BC	25C4	25CA
□	▲	▶	▼	◀	◇

Alphabetic Presentation Forms

Block from FB00 to FB4F

FB00	FB01	FB02	FB03	FB04
ff	fi	fl	ffi	ffl

Arabic Presentation Forms-B

Block from FE70 to FEFF

FEFF



Unencoded Glyphs

All unencoded glyphs are accessible with OpenType layout feature capable applications.

Access All Alternates

-
β

Case-Sensitive Forms

-	-	-	-	-	-	-	-	-	-	-	-	-	-	-	-	-	-	-	-
()	-	@	[]	_	{	}	!	«	-	·	»	¿	-	—	•	<	>

Case-Sensitive Forms, Glyph Composition / Decomposition

-	-	-	-	-	-	-	-	-	-	-	-	-	-	-	-	-	-	-	-
`	´	^	~	-	˘	·	¨	°	¨	˘	·	,	˘	˘	˘	˘	˘	˘	˘

Case-Sensitive Forms, Lining Figures, Tabular Figures

-	-	-	-	-	-	-	-	-	-	-	-
0	1	2	3	4	5	6	7	8	9		

Denominators, Fractions

-	-	-	-	-	-	-	-	-	-	-
0	1	2	3	4	5	6	7	8	9	

Fractions

-

Fractions, Numerators

-	-	-	-	-	-	-	-	-	-	-
0	1	2	3	4	5	6	7	8	9	



Standard Ligatures

-	-	-	-	-
ff	ffi	ffl	fi	fl

Localized Forms

-	-	-
i	Ł	ł

Oldstyle Figures, Proportional Figures

-	-	-	-	-	-	-	-	-	-	-
o	1	2	3	4	5	6	7	8	9	

Ornaments

-	-	-	-	-	-	-	-	-	-	-	-	-	-	-	-
□	■	□	■	□	■	□	□	□	⊗	⊗	⊗	■	■	■	■

Stylistic Alternates, Stylistic Set 1

-	-	-	-	-	-	-	-	-	-	-	-	-	-	-	-	-	-	-	-
"	#	'	()	/	[\]	_	{		}	«	¬	○	»	—	—	'
-	-	-	-	-	-	-	-	-	-	-	-	-	-	-	-	-	-	-	-
'	,	“	”	„	<	>	←	↑	→	↓	↔	↕	↖	↗	↘	↙			

Stylistic Set 2

-	-	-	-	-	-	-	-	-	-	-	-	-	-
ɑ	à	á	â	ã	ä	å	ā	ǎ	ą	ǎ	ǎ	ą	ą

Stylistic Set 3

-	-	-	-	-	-	-
()	[]	{		}

Stylistic Set 4

-	-	-	-	-	-	-
()	[]	{		}



Stylistic Set 5

-	-
/	\

Stylistic Set 6

-	-
/	\

Stylistic Set 7

-
—

Stylistic Set 8

-
—

Stylistic Set 9

-
⌘

Stylistic Set 10

-
1

Tabular Figures

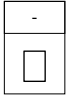
-	-	-	-	-	-	-	-	-	-	-	-	-	-	-	-	-	-	-	-
#	\$	+	<	=	>	~	¢	£	¤	¥	§	-	±	×	÷	<i>f</i>	€	-	o
-	-	-	-	-	-	-	-	-	-	-	-	-	-	-	-	-	-	-	-
1	2	3	4	5	6	7	8	9											

Slashed Zero

-
0



Other





OpenType Layout Features

For details about OpenType Layout Features see the [OpenType Layout tag registry](#).

Substitution Features

	<p>Access All Alternates This feature makes all variations of a selected character accessible.</p>		<p>Standard Ligatures Replaces a sequence of glyphs with a single glyph which is preferred for typographic purposes. This feature covers the ligatures which the designer/manufacturer judges should be used in normal conditions.</p>
	<p>Oldstyle Figures This feature changes selected figures from the default lining style to oldstyle form.</p>		<p>Lining Figures This feature changes selected figures from oldstyle to the default lining form.</p>
	<p>Proportional Figures Replaces figure glyphs set on uniform (tabular) widths with corresponding glyphs set on glyph-specific (proportional) widths.</p>		<p>Tabular Figures Replaces figure glyphs set on proportional widths with corresponding glyphs set on uniform (tabular) widths.</p>
	<p>Slashed Zero Some fonts contain both a default form of zero, and an alternative form which uses a diagonal slash through the counter. This feature allows the user to change from the default 0 to a slashed form.</p>		<p>Numerators Replaces selected figures which precede a slash with numerator figures, and replaces the typographic slash with the fraction slash.</p>
	<p>Denominators Replaces selected figures which follow a slash with denominator figures.</p>		<p>Fractions Replaces figures separated by a slash with 'common' (diagonal) fractions.</p>
	<p>Superscript Replaces lining or oldstyle figures with superior figures (primarily for footnote indication), and may replace lowercase letters with superior letters (primarily for abbreviated French titles).</p>		<p>Subscript The "subs" feature may replace a default glyph with a subscript glyph.</p>
	<p>Scientific Inferiors Replaces lining or oldstyle figures with inferior figures (smaller glyphs which sit lower than the standard baseline, primarily for chemical or mathematical notation). May also replace lowercase characters with alphabetic inferiors.</p>		<p>Ordinals Replaces default alphabetic glyphs with the corresponding ordinal forms for use after figures.</p>
	<p>Historical Forms Some letterforms were in common use in the past, but appear anachronistic today. The best-known example is the long form of s; others would include the old Fraktur k. Some fonts include the historical forms as alternates, so they can be used for a 'period' effect.</p>		<p>Case-Sensitive Forms Shifts various punctuation marks up to a position that works better with all-capital sequences or sets of lining figures; also changes oldstyle figures to lining figures.</p>



Localized Forms
This feature enables localized forms of glyphs to be substituted for default forms.



Stylistic Alternates
Many fonts contain alternate glyph designs for a purely esthetic effect; these don't always fit into a clear category like swash or historical. This feature replaces the default forms with the stylistic alternates.



Stylistic Set 1
Glyphs in stylistic sets may be designed to harmonise visually, interact in particular ways, or otherwise work together.



Stylistic Set 2



Stylistic Set 3



Stylistic Set 4



Stylistic Set 5



Stylistic Set 6



Stylistic Set 7



Stylistic Set 8



Stylistic Set 9



Stylistic Set 10



Stylistic Set 11



Glyph Composition / Decomposition
To minimize the number of glyph alternates, it is sometimes desired to decompose a character into two glyphs. Additionally, it may be preferable to compose two characters into a single glyph for better glyph processing. This feature permits such composition/decomposition.



Ornaments
This feature gives the user access to ornament glyphs (e.g. fleurons, dingbats and border elements) in the font.

Positioning Features



Capital Spacing
Globally adjusts inter-glyph spacing for all-capital text. Most typefaces contain capitals and lowercase characters, and the capitals are positioned to work with the lowercase. When capitals are used for words, they need more space between them for legibility and esthetics.



Kerning
Adjusts amount of space between glyphs, generally to provide optically consistent spacing between glyphs.



Languages

Information about languages is mainly based on the Unicode Common Locale Data Repository. For details visit the [Unicode CLDR Project](#).

Latin

Afrikaans	German	Makhuwa-Meetto	Serbian
Albanian	Gusii	Makonde	Shambala
Asturian	Hungarian	Malagasy	Shona
Asu	Icelandic	Maltese	Slovak
Basque	Igbo	Manx	Slovenian
Bemba	Inari Sami	Meru	Soga
Bena	Indonesian	Morisyen	Somali
Breton	Irish	North Ndebele	Spanish
Catalan	Italian	Northern Sami	Swahili
Chiga	Jola-Fonyi	Norwegian Bokmål	Swedish
Colognian	Kabuverdianu	Norwegian Nynorsk	Swiss German
Cornish	Kabyle	Nyankole	Tachelhit
Croatian	Kalaallisut	Oromo	Taita
Czech	Kalenjin	Polish	Tasawaq
Danish	Kamba	Portuguese	Teso
Dutch	Kikuyu	Prussian	Turkish
Embu	Kinyarwanda	Quechua	Upper Sorbian
English	Koyra Chiini	Romanian	Uzbek
Esperanto	Koyraboro Senni	Romansh	Volapük
Estonian	Langi	Rombo	Vunjo
Faroese	Latvian	Rundi	Walser
Filipino	Lithuanian	Rwa	Welsh
Finnish	Lower Sorbian	Samburu	Western Frisian
French	Luo	Sango	Yoruba
Friulian	Luxembourgish	Sangu	Zarma
Galician	Luyia	Scottish Gaelic	Zulu
Ganda	Machame	Sena	



Character Set

Adobe

Adobe Latin-1
Adobe Latin-2

Apple Macintosh

MacOS Central European Latin
MacOS Croatian
MacOS Iceland
MacOS Roman (Standard Latin)
MacOS Romanian
MacOS Turkish

ISO 8859

8859-1 Latin-1 Western European
8859-10 Latin-6 Nordic
8859-13 Latin-7 Baltic Rim
8859-14 Latin-8 Celtic
8859-15 Latin-9
8859-16 Latin-10 South-Eastern European
8859-2 Latin-2 Central European
8859-3 Latin-3 South European
8859-4 Latin-4 North European
8859-9 Latin-5 Turkish

Microsoft Windows

MS Windows 1250 Central European Latin
MS Windows 1252 Western (Standard Latin)
MS Windows 1254 Turkish Latin
MS Windows 1257 Baltic Latin



Technical Data

Identification

Table	Description	Value
-	File name	ReplicaLL-Regular.otf
-	File size	157528 bytes
-	MD5 checksum	0DDE2311EFC0130EE52A0C010A16B485
head	created	Wed Apr 10 13:15:57 2019
head	modified	Fri Sep 24 10:50:59 2021
name	Unique font identifier	Lineto: Replica LL-Regular: 2019
name	Version string	Version 5.000; build 0031
CFF	Outline format	PostScript

Names

ID	Description	Value
1	Family name	Replica LL
2	Subfamily name	Regular
4	Full font name	Replica LL
6	Postscript name	ReplicaLL-Regular

Classification & Style

Table	Description	Value
OS/2	Width class	5 - Medium (normal)
OS/2	Weight class	400 - Normal (Regular)
post	Italic angle	0.0°
OS/2	fsSelection style bits	Regular
head	macStyle bits	
OS/2	PANOSE Family Kind	2 - Latin Text
OS/2	PANOSE Serif Style	2 - Normal Sans
OS/2	PANOSE Weight	5 - Book
OS/2	PANOSE Proportion	4 - Even Width
OS/2	PANOSE x-height	4 - Constant/Large



Legal Information

ID	Description	Value
0	Copyright	© 2008, Copyright by Lineto GmbH. All rights reserved.
7	Trademark	Replica is a trademark of Lineto
8	Manufacturer	Lineto
9	Designer	NORM
10	Font Description	Replica LL is designed by NORM (Dimitri Bruni, Manuel Krebs), released by Lineto in 2008. Font engineering and mastering by Alphabet Type GmbH.
11	Vendor URL	https://www.lineto.com
12	Designer URL	https://www.lineto.com/The+Designers
13	License Description	No use of this font is allowed without Lineto's consent and without the user's compliance with the Lineto EULA and the SUL. Lawful use of the fonts or the data contained within the font files excludes modifying, reassembling, renaming, storing on publicly available servers, redistributing and selling. Any unlawful use of this typographic software will be prosecuted. For additional information see https://lineto.com/licensing
14	License Info URL	https://lineto.com/licensing



Vertical Metric

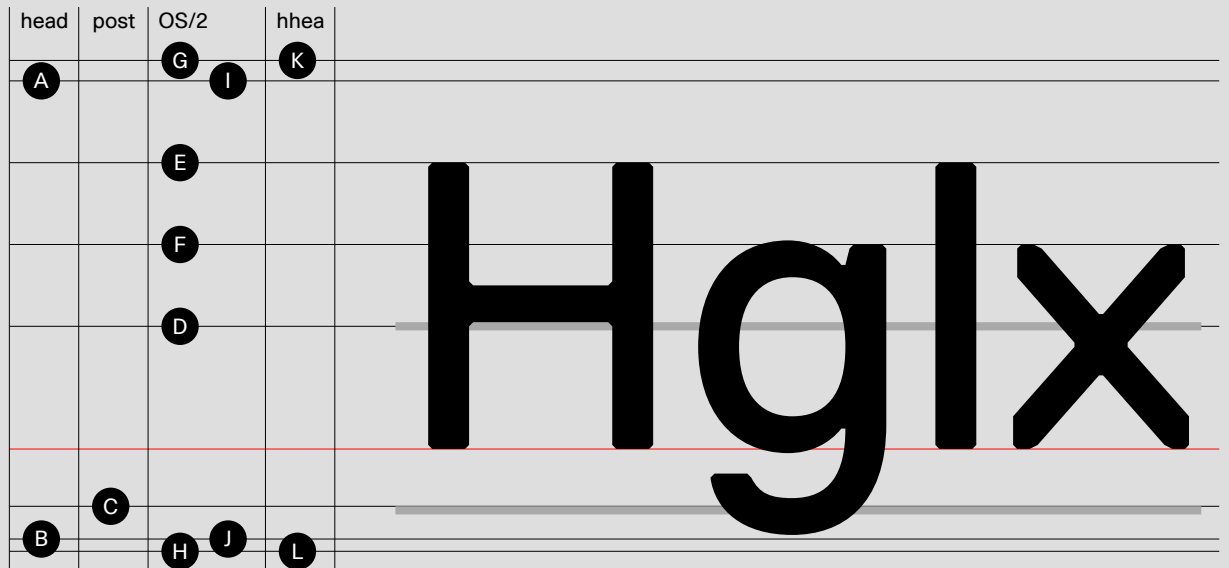


	Table	Description	Value
	head	Units perEM	1000
A	head	y Max	900
B	head	y Min	-220
C	post	Underline Position	-140
	post	Underline Size	20
D	OS/2	Strikeout Position	300
	OS/2	Strikeout Size	20
E	OS/2	Caps Height	700
F	OS/2	x Height	500
G	OS/2	Typo Ascender	950
H	OS/2	Typo Descender	-250
	OS/2	Typo Linegap	0
I	OS/2	Win Ascender	900
J	OS/2	Win Descender	220
K	hhea	Ascender	950
L	hhea	Descender	-250
	hhea	Linegap	0